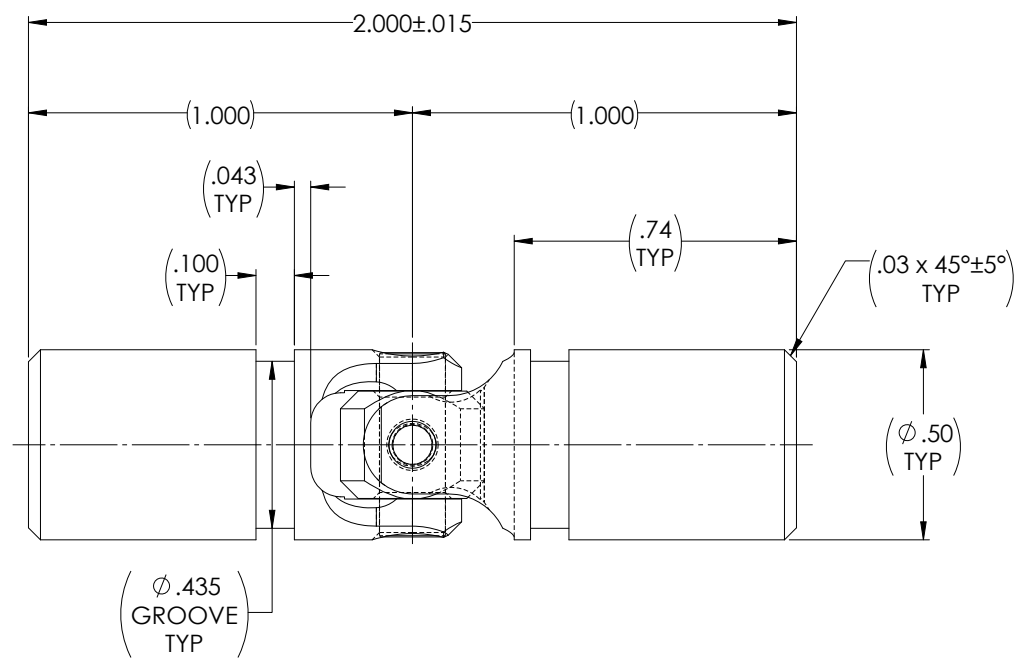
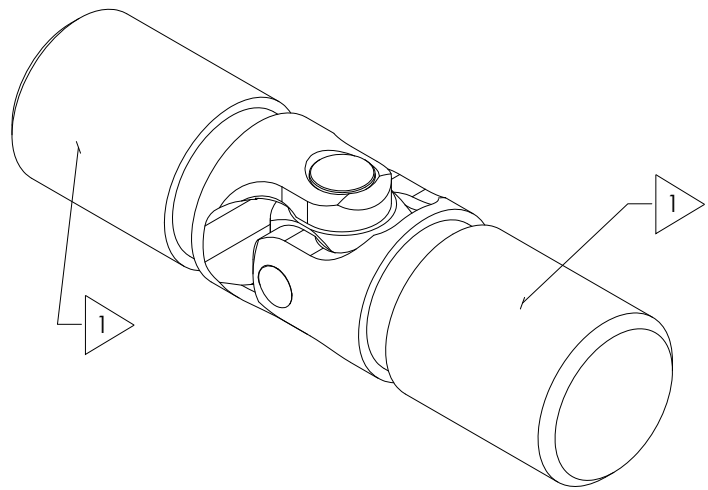


# APPROVED

REVISIONS				
ZONE	REV.	DESCRIPTION	DATE	APPROVED

## FOR REFERENCE ONLY



NOTE(s), UNLESS OTHERWISE SPECIFIED.

**1** LASER MARK or ELECTRO-ETCH ASSEMBLY w/ "BELDEN" LOGO, PART NUMBER, REVISION LEVEL, DATE OF MANUFACTURE (MO/YR) & BELDEN JOB No. SPLIT MARKING BETWEEN YOKES IF NEEDED.

**(2)** LUBRICATE U-JOINT w/ LUBRIPLATE # 1200-2, NLGI GRADE 2, AW/EP, LITHIUM GREASE OR EQUIVALENT.

**(3)** REF., MATERIAL: TYPE 316/316L STAINLESS STEEL.

**(4)** REF., MAXIMUM OPERATING ANGLE: 45°

DO NOT SCALE DRAWING

UNLESS OTHERWISE SPECIFIED CHAMFER ALL HOLES BREAK ALL SHARP CORNERS DE-BURR ALL FEATURES  TURNED SURFACES: $\sqrt{63}$ MILLED SURFACES: $\sqrt{125}$  <b>PROPRIETARY AND CONFIDENTIAL</b> THE INFORMATION CONTAINED IN THIS DRAWING IS THE SOLE PROPERTY OF BELDEN UNIVERSAL. ANY REPRODUCTION IN PART OR AS A WHOLE WITHOUT THE WRITTEN PERMISSION OF BELDEN UNIVERSAL IS PROHIBITED.	STANDARD TOLERANCES, UNLESS OTHERWISE SPECIFIED  DIMENSIONS ARE IN INCHES [mm]  ANGULAR MACHINED: $\pm 1.0^\circ$ FRACTIONAL: $\pm .015$ TWO PLACE DECIMAL: $\pm .010$ THREE PLACE DECIMAL: $\pm .005$ FOUR PLACE DECIMAL: $\pm .0005$ CONCENTRICITY: $.0025$ T.I.R.	MATERIAL: STAINLESS STEEL  HEAT TREAT: NONE  FINISH: NONE	DRAWN: JP CHECKED: RNK ENG APPR: RNK MFG APPR: QC APPR:	INITIALS: JP DATE: 17MAY24 08/12/2024 08/12/2024	Belden Universal <a href="http://www.beldenuniversal.com">www.beldenuniversal.com</a>  TITLE: ASSEMBLY, UNIVERSAL JOINT  SIZE: A DWG. NO.: UJ-SS500-316x00 SCALE: 4:1   WT (Lbs): 0.097   SHEET 1 OF 2
	ALL HOLES TO BE LOCATED ON CENTERLINE (C) WITHIN .005" T.I.R. INTERPRET GEOMETRIC TOLERANCES I.A.W. ASME Y14.5		COMMENTS:		
	COMMENTS:				
	COMMENTS:				