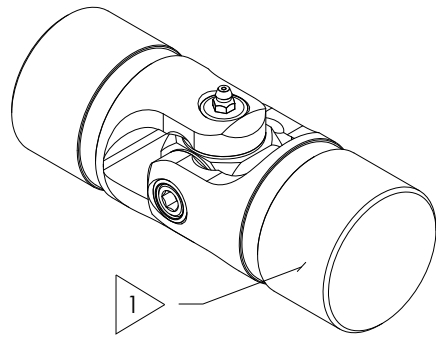


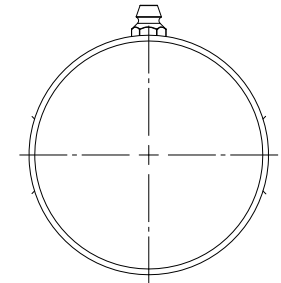
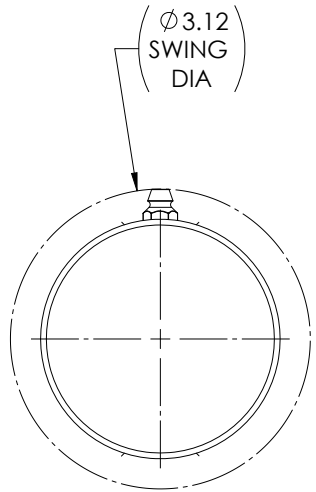
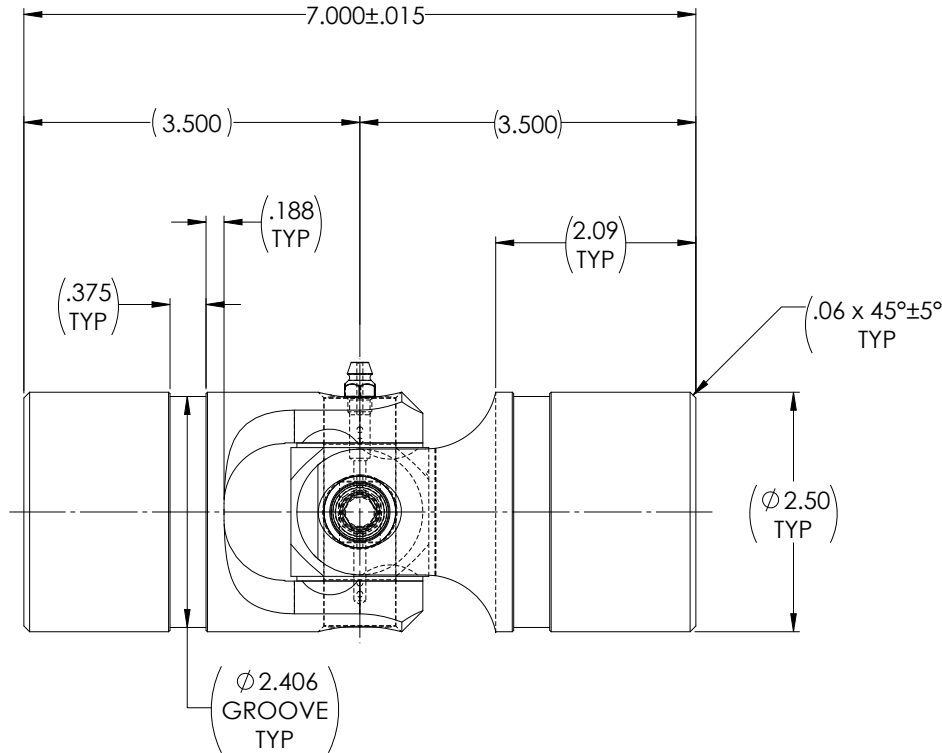
APPROVED

REVISIONS				
ZONE	REV.	DESCRIPTION	DATE	APPROVED

FOR REFERENCE ONLY



SCALE 1 : 1.5



NOTE(S), UNLESS OTHERWISE SPECIFIED.

- 1 MARK ASSEMBLY w/ "BELDEN" LOGO, PART NUMBER, REVISION LEVEL, DATE OF MANUFACTURE (MO/YR) & BELDEN JOB No.
- 2 CLEAN SOCKET HEAD CAP SCREW AND ID THREADS OF MATING PIN w/ LOC-TITE PRIMER #T7471. APPLY LOC-TITE #2760 OR EQUIVALENT THREAD LOCKER TO THREADS OF 3/8-24 S.H.C.S. TAKE CARE TO KEEP THREADS FREE OF GREASE. TORQUE 3/8-24 SOCKET HEAD CAP SCREW TO 30 FT-LBS.
- (3) LUBRICATE WITH LUBRIPLATE® PRODUCT No. 1200-2 NLGI GRADE 2, AW/EP, LITHIUM GREASE.
- (4) MAXIMUM OPERATING ANGLE: 45°.
- (5) REF., MATERIAL: YOKES, BLOCK & PINS... TYPE 316/316L STAINLESS STEEL, FASTENERS...TYPE 316 STAINLESS STEEL, LUBRICATION FITTING... TYPE 316 STAINLESS STEEL or MONEL.

DO NOT SCALE DRAWING

UNLESS OTHERWISE SPECIFIED CHAMFER ALL HOLES BREAK ALL SHARP CORNERS DE-BURR ALL FEATURES TURNED SURFACES: \sqrt{R} MILLED SURFACES: $\sqrt{125}$ PROPRIETARY AND CONFIDENTIAL THE INFORMATION CONTAINED IN THIS DRAWING IS THE SOLE PROPERTY OF BELDEN UNIVERSAL. ANY REPRODUCTION IN PART OR AS A WHOLE WITHOUT THE WRITTEN PERMISSION OF BELDEN UNIVERSAL IS PROHIBITED.	STANDARD TOLERANCES, UNLESS OTHERWISE SPECIFIED DIMENSIONS ARE IN INCHES [mm] ANGULAR MACHINED: $\pm 1.0^\circ$ FRACTIONAL: $\pm .015$ TWO PLACE DECIMAL: $\pm .010$ THREE PLACE DECIMAL: $\pm .005$ FOUR PLACE DECIMAL: $\pm .0005$ CONCENTRICITY: $\pm .0025$ T.I.R.	MATERIAL STAINLESS STEEL HEAT TREAT NONE FINISH NONE	INITIALS DATE DRAWN JPK 02OCT24 CHECKED RNK 10/03/2024 ENG APPR. RNK 10/03/2024 MFG APPR. QC APPR.	TITLE: ASSEMBLY, UNIVERSAL JOINT	SIZE A DWG. NO. UJ-SS2500-316x00 SCALE: 1:1 WT (Lbs): 8.175 SHEET 1 OF 2
	ALL HOLES TO BE LOCATED ON CENTERLINE (C) WITHIN .005" T.I.R. INTERPRET GEOMETRIC TOLERANCES I.A.W. ASME Y14.5				
	COMMENTS:				
	Belden Universal www.beldenuniversal.com				