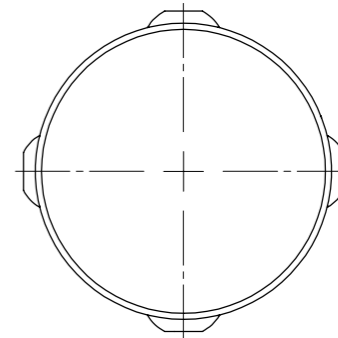
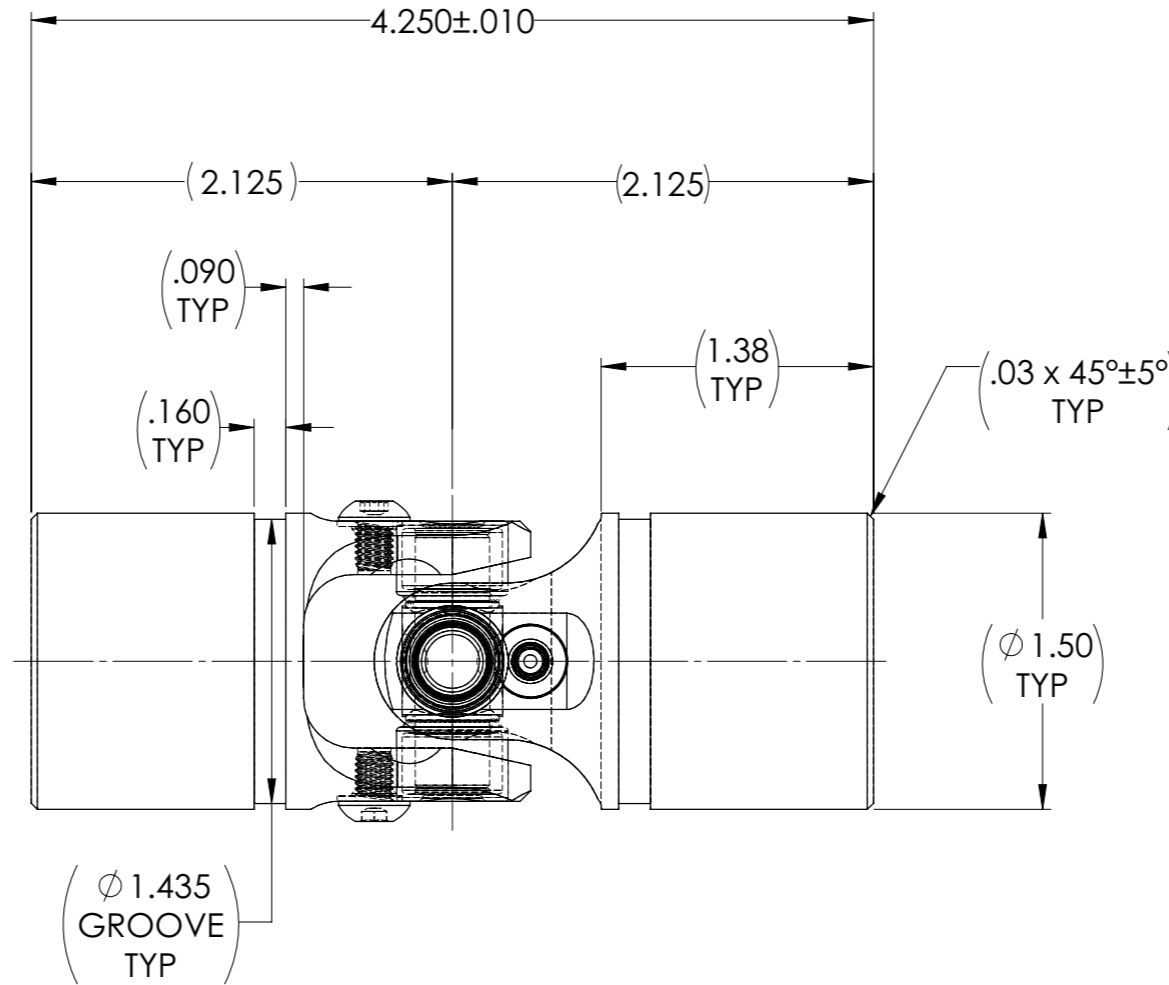
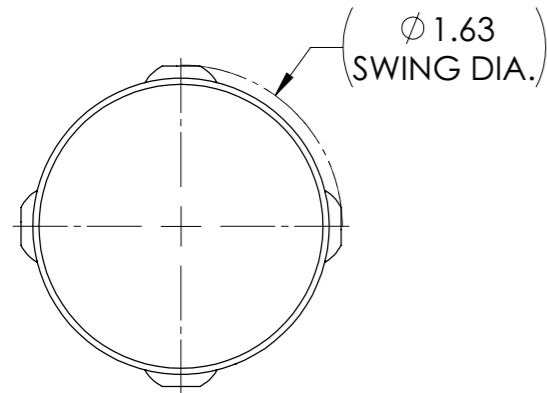
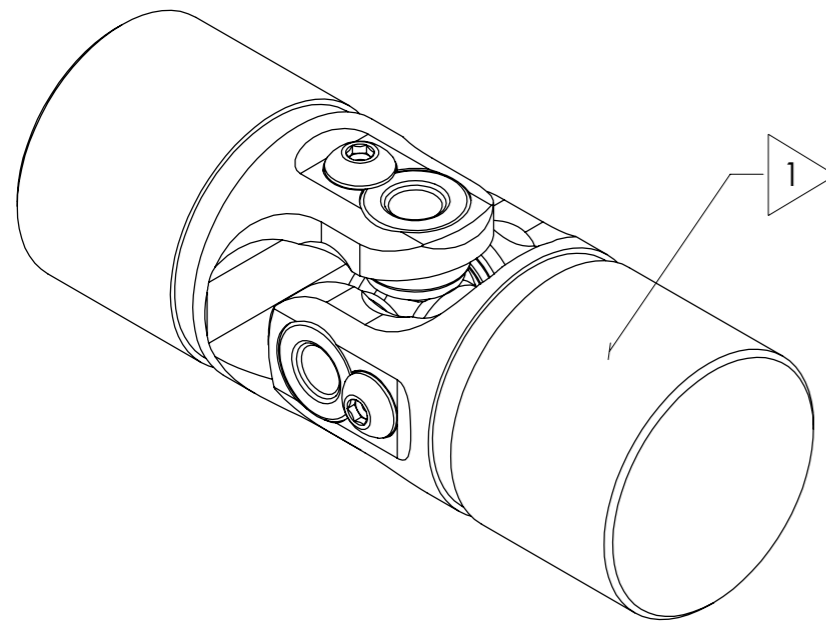


APPROVED

| REVISIONS | | | | |
|-----------|------|-------------|------|----------|
| ZONE | REV. | DESCRIPTION | DATE | APPROVED |
| | | | | |

INFORMATION IN THIS DRAWING
PROVIDED FOR REFERENCE ONLY



NOTE(s), UNLESS OTHERWISE SPECIFIED.

1 MARK ASSEMBLY w/ "BELDEN" LOGO, PART NUMBER, REVISION LEVEL (IF ANY), DATE OF MANUFACTURE, & BELDEN JOB No.

(2) PACK NEEDLE BEARINGS w/ TRIBOLUBE 12, NLGI GRADE 2, MULTI-PURPOSE SYNTHETIC GREASE.

(3) REF., MATERIAL: YOKES...ALLOY STEEL, CROSS & BEARINGS...ALLOY STEEL, B.H.C.S...ALLOY STEEL, O-RINGS...BUNA-N.

(4) REF., MAXIMUM OPERATING ANGLE: 45°.

DO NOT SCALE DRAWING

| | | | | | | |
|--|--|---|------------------------------|-----------------------------------|--|-----------------|
| UNLESS OTHERWISE SPECIFIED CHAMFER ALL HOLES BREAK ALL SHARP CORNERS DE-BURR ALL FEATURES TURNED SURFACES: $\sqrt{63}$ MILLED SURFACES: $\sqrt{125}$ | STANDARD TOLERANCES, UNLESS OTHERWISE SPECIFIED DIMENSIONS ARE IN INCHES [mm] ANGULAR MACHINED: $\pm 1.0^\circ$ FRACTIONAL: $\pm .015^\circ$ TWO PLACE DECIMAL: $\pm .010^\circ$ THREE PLACE DECIMAL: $\pm .005^\circ$ FOUR PLACE DECIMAL: $\pm .0005^\circ$ CONCENTRICITY: $.0025^\circ$ T.I.R. | MATERIAL ALLOY STEEL HEAT TREAT N/A FINISH NONE | DRAWN JP 21MAY19 | INITIALS JP DATE 21MAY19 | Belden Incorporated www.beldenuniversal.com TITLE: ASSEMBLY, NEEDLE BEARING UNIVERSAL JOINT | |
| | | | CHECKED JMH 05/21/2019 | ENG APPR. RNK 05/22/2019 | | |
| | | | MFG APPR. | QC APPR. | | |
| | | | COMMENTS: | | | |
| PROPRIETARY AND CONFIDENTIAL THE INFORMATION CONTAINED IN THIS DRAWING IS THE SOLE PROPERTY OF BELDEN UNIVERSAL. ANY REPRODUCTION IN PART OR AS A WHOLE WITHOUT THE WRITTEN PERMISSION OF BELDEN UNIVERSAL IS PROHIBITED. | | ALL HOLES TO BE LOCATED ON CENTERLINE (☉) WITHIN .005" T.I.R. INTERPRET GEOMETRIC TOLERANCES I.A.W. ASME Y14.5 | | SIZE A | DWG. NO. UJ-NB1500x00 | REV B |
| | | SCALE: 3:2 | | WT (Lbs): 1.723 | SHEET 1 OF 2 | |