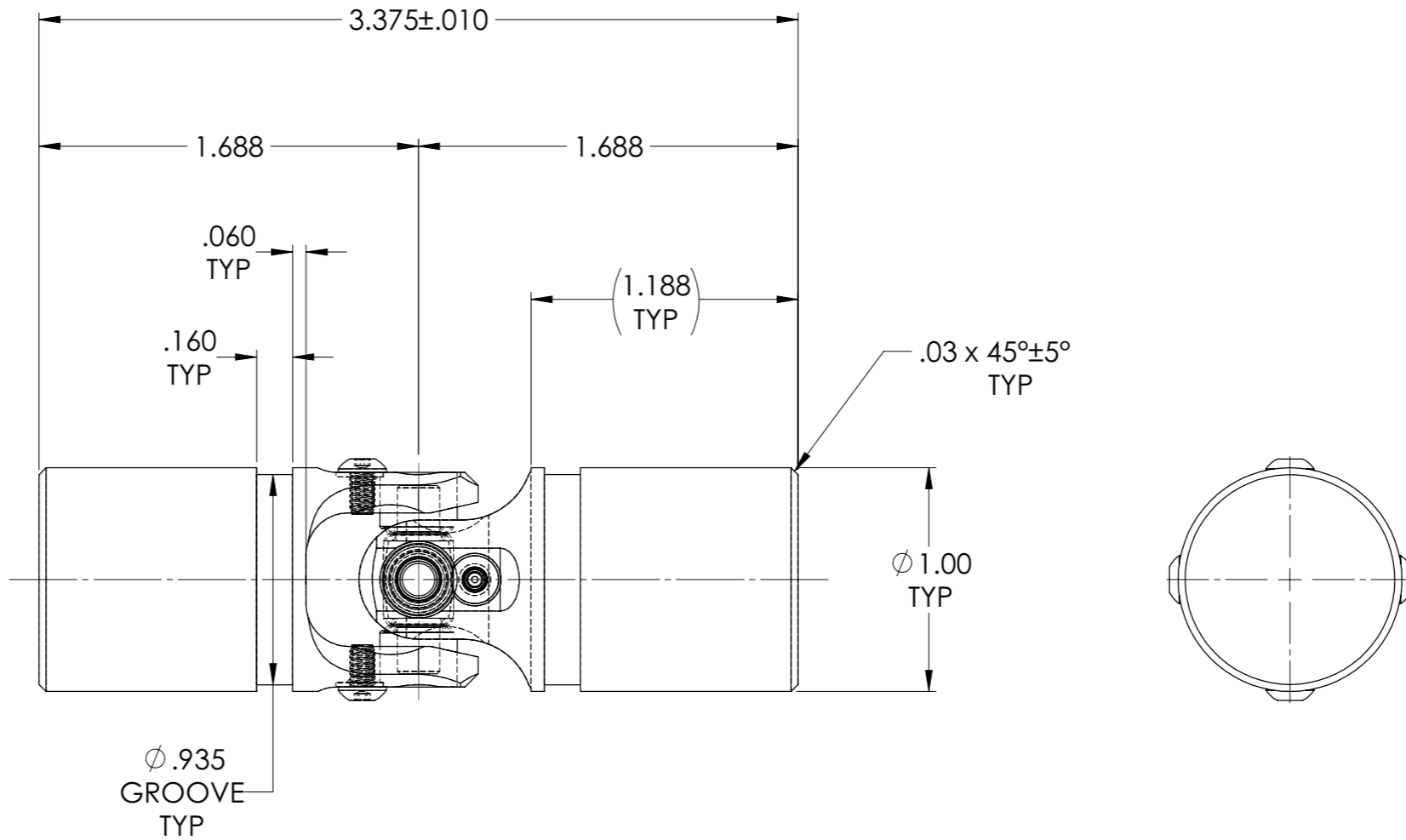
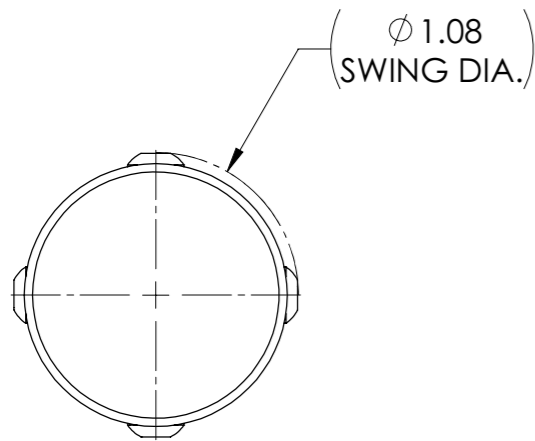
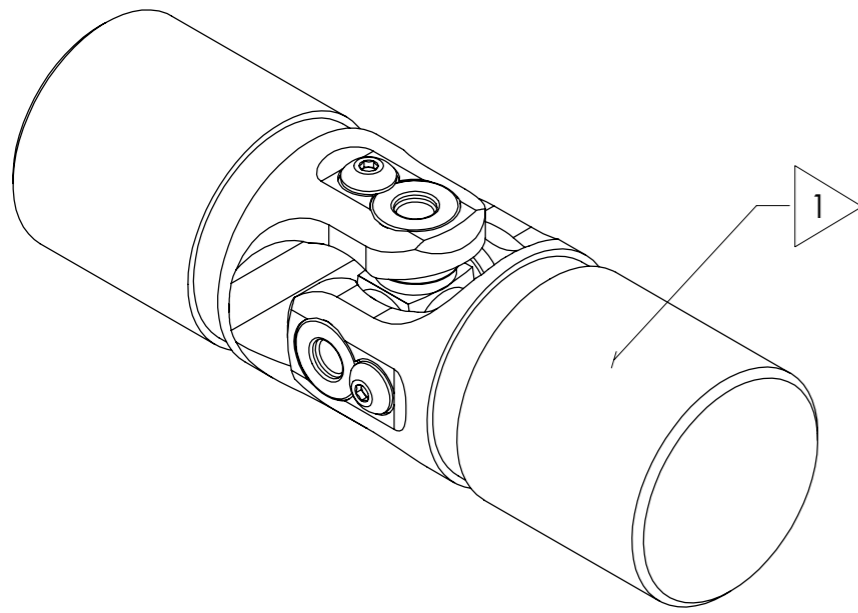


# APPROVED

REVISIONS				
ZONE	REV.	DESCRIPTION	DATE	APPROVED

INFORMATION IN THIS DRAWING  
PROVIDED FOR REFERENCE ONLY



NOTE(s), UNLESS OTHERWISE SPECIFIED.

1 MARK ASSEMBLY w/ "BELDEN" LOGO, PART NUMBER, REVISION LEVEL (IF ANY), DATE OF MANUFACTURE, & BELDEN JOB No.

(2) PACK NEEDLE BEARINGS w/ TRIBOLUBE 12, NLGI GRADE 2, MULTI-PURPOSE SYNTHETIC GREASE.

(3) REF., MATERIAL: YOKES...ALLOY STEEL, CROSS & BEARINGS...ALLOY STEEL, B.H.C.S...18-8 STAINLESS STEEL, O-RINGS...BUNA-N.

(4) REF., MAXIMUM OPERATING ANGLE 45°.

DO NOT SCALE DRAWING

UNLESS OTHERWISE SPECIFIED CHAMFER ALL HOLES BREAK ALL SHARP CORNERS DE-BURR ALL FEATURES TURNED SURFACES: $\checkmark_{63}$ MILLED SURFACES: $\checkmark_{125}$ PROPRIETARY AND CONFIDENTIAL <small>THE INFORMATION CONTAINED IN THIS DRAWING IS THE SOLE PROPERTY OF BELDEN UNIVERSAL. ANY REPRODUCTION IN PART OR AS A WHOLE WITHOUT THE WRITTEN PERMISSION OF BELDEN UNIVERSAL IS PROHIBITED.</small>	STANDARD TOLERANCES, UNLESS OTHERWISE SPECIFIED DIMENSIONS ARE IN INCHES [mm] ANGULAR MACHINED: $\pm 1.0^\circ$ FRACTIONAL: $\pm .015"$ TWO PLACE DECIMAL: $\pm .010"$ THREE PLACE DECIMAL: $\pm .005"$ FOUR PLACE DECIMAL: $\pm .0005"$ CONCENTRICITY: $.0025"$ T.I.R. ALL HOLES TO BE LOCATED ON CENTERLINE ( $\phi$ ) WITHIN $.005"$ T.I.R. INTERPRET GEOMETRIC TOLERANCES I.A.W. ASME Y14.5	MATERIAL ALLOY STEEL HEAT TREAT N/A FINISH NONE	DRAWN JP 17MAY19	INITIALS JP	DATE 17MAY19	Belden Incorporated <a href="http://www.beldenuniversal.com">www.beldenuniversal.com</a> TITLE: ASSEMBLY, UNIVERSAL JOINT, NEEDLE BEARING SIZE <b>A</b>	
			CHECKED JMH 05/17/2019	ENG APPR. RNK 05/17/2019	MFG APPR.  		REV <b>A</b>
			COMMENTS:				DWG. NO. UJ-NB1000x00
			SCALE: 2:1				WT (Lbs): 0.601