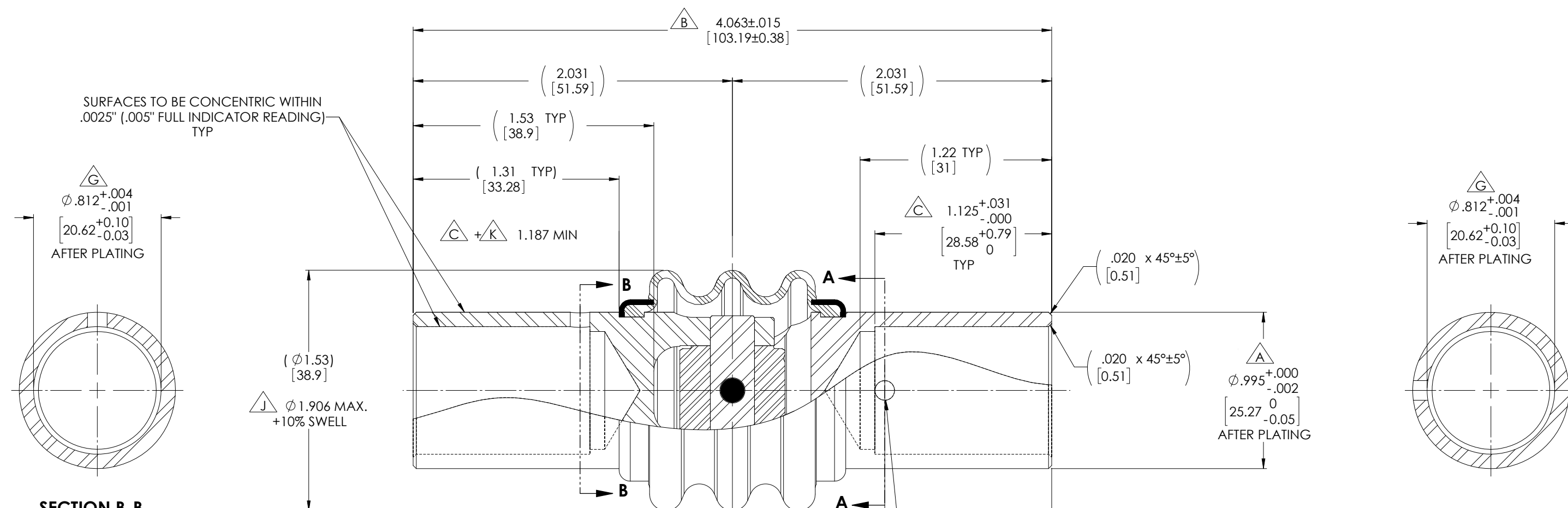


REVISIONS				
ZONE	REV.	DESCRIPTION	DATE	APPROVED



SECTION B-B  
BOOT & CLAMPS REMOVED FOR CLARITY

SECTION A-A  
BOOT & CLAMPS REMOVED FOR CLARITY

NOTES(s), UNLESS OTHERWISE SPECIFIED.

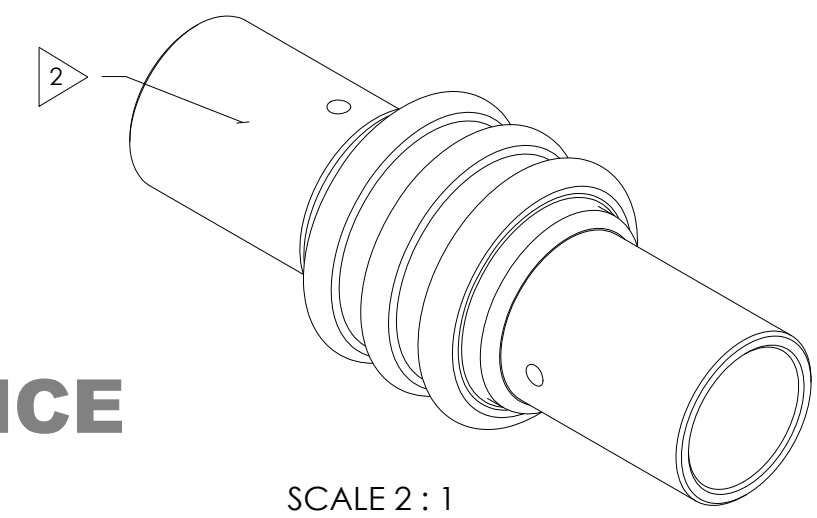
- (1) REF., FINISH (ALL EXTERNAL STEEL COMPONENTS): CADMIUM PLATE I.A.W. SAE-AMS-QQ-P-416, TYPE II (YELLOW CHROMATE), CLASS 2.
- 2 IDENTIFICATION: ELECTRO ETCH or LASER MARK ASSEMBLY w/ NAME, PART NUMBER, MANUFACTURER CAGE CODE, AND DATE OF MANUFACTURE (MO/YR) & BELDEN JOB No.  
  
BELDEN  
MS20271B16  
1R6X2 MO/YR  
(JOB No.)
- (3) LUBRICATION: LUBRICANT TO CONSIST OF A UNIFORM MIXTURE OF GREASE CONFORMING TO MIL-PRF-32014 or MIL-PRF-81322 WITH A 6% ± 1/2 % BY WEIGHT ADDITIVE OF CONFORMING TO SAE-AMS-M-7866 LUBRICANT, MOLYBDENUM DISULFIDE.
- (4) CLOSURE (BOOT): MUST BE RESISTANT TO OZONE CRACKING AND BE ABLE TO RETAIN THE LUBRICANT AT ALL TEMPERATURES BETWEEN -67° F (-55° C) AND 160° F (71° C) DURING OPERATION.
- (5) ANGULARITY: MUST BE OPERABLE TO A MINIMUM ANGLE OF 30°.
- (6) TORSIONAL PLAY (BACKLASH): .32° (±2%) @ 8 In-Lbs (±2%).
- (7) END PLAY: .0027" TOTAL WITH A 5 LB LOAD APPLIED IN BOTH DIRECTIONS WITHOUT LUBRICANT.
- (8) SIDE PLAY: .0055" TOTAL WITH A 5 LB LOAD APPLIED IN BOTH DIRECTIONS WITHOUT LUBRICANT.
- (9) REF., STATIC TORQUE: 4,700 IN-LBS. ± 2%.
- (10) REF., TENSILE OR COMPRESSIVE STRENGTH: 5,000 LBS. ± 2%.
- (11) UNIVERSAL JOINT DESIGNED AND TESTED I.A.W. MIL-DTL-6193D, CLASS 2, TYPE B.
- (12) FLAG NOTES  $\triangle A$ ,  $\triangle B$ ,  $\triangle C$  ... CORRESPOND TO DIMENSIONS AS LABELED ON SPECIFICATION MS20271.

$\triangle H$  1.062±.015  
[26.97±0.38] TYP

$\phi$ .125<sup>+.004</sup><sub>-.001</sub> INSPECTION HOLE  
[3.18<sup>+.10</sup><sub>-.03</sub>]

THRU ONE WALL ONLY.  
MUST BE PARALLEL TO YOKE  
EAR HOLES WITHIN 1°.  
TYP

**FOR  
REFERENCE  
ONLY**



SCALE 2 : 1

DO NOT SCALE DRAWING

UNLESS OTHERWISE SPECIFIED: CHAMFER ALL HOLES BREAK ALL SHARP CORNERS DE-BURR ALL FEATURES	STANDARD TOLERANCES, UNLESS OTHERWISE SPECIFIED  DIMENSIONS ARE IN INCHES (mm)	MATERIAL:	INITIALS	DATE	Belden Universal www.beldenuniversal.com
		ALLOY STEEL	SFM	09APR07	
TURNED SURFACES: $\checkmark$ <sub>63</sub> MILLED SURFACES: $\checkmark$ <sub>125</sub>	ANGULAR MACHINED: ±1.0° FRACTIONAL: ±.015" TWO PLACE DECIMAL: ±.010" THREE PLACE DECIMAL: ±.005" FOUR PLACE DECIMAL: ±.0005" CONCENTRICITY: .0025" T.I.R.	HEAT TREAT:	ENG APPR.	RNK	11NOV09
		SEE DETAIL DRAWINGS	MFG APPR.		
PROPRIETARY AND CONFIDENTIAL THE INFORMATION CONTAINED IN THIS DRAWING IS THE SOLE PROPERTY OF BELDEN UNIVERSAL. ANY REPRODUCTION IN PART OR AS A WHOLE WITHOUT THE WRITTEN PERMISSION OF BELDEN UNIVERSAL IS PROHIBITED.	ALL HOLES TO BE LOCATED ON CENTERLINE (Q) WITHIN .005" T.I.R. INTERPRET GEOMETRIC TOLERANCES I.A.W. ASME Y14.5	FINISH/COATING:	COMMENTS:		SIZE DWG. NO.
		CADMIUM PLATED			<b>B</b> MS20271B16
					SCALE: 3:1 WEIGHT (Lbs): 0.462 SHEET 1 OF 2