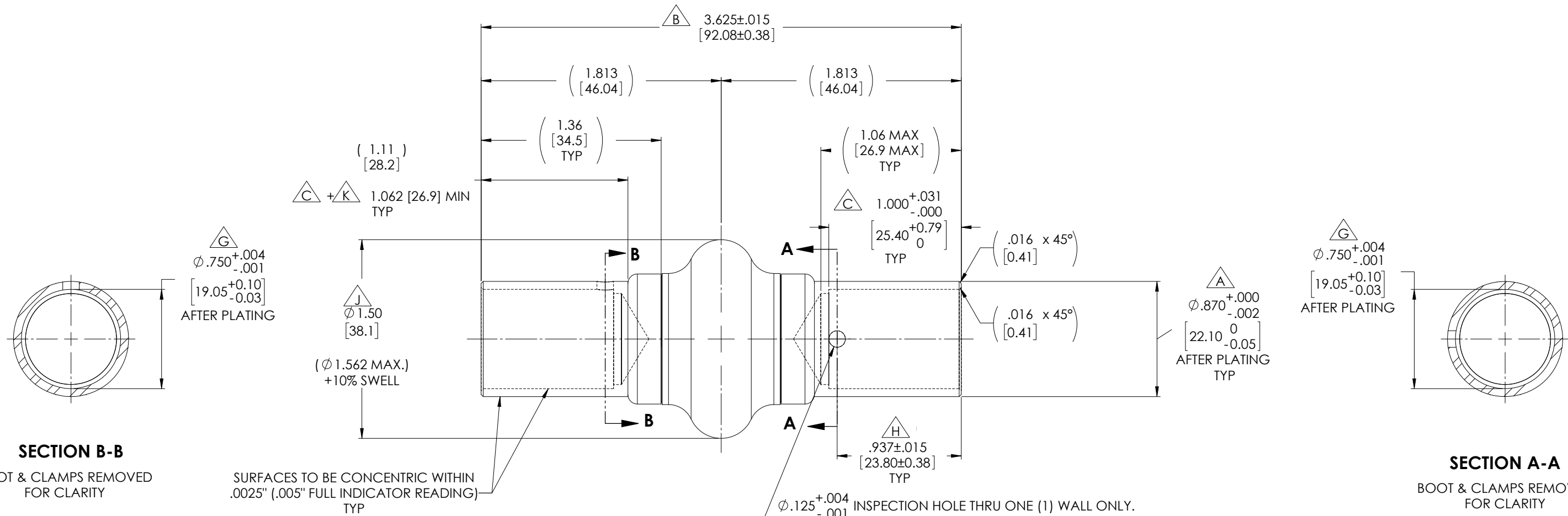


APPROVED

REVISIONS			
ZONE	REV.	DESCRIPTION	DATE



SECTION B-B

BOOT & CLAMPS REMOVED FOR CLARITY

SECTION A-A

BOOT & CLAMPS REMOVED FOR CLARITY

SURFACES TO BE CONCENTRIC WITHIN .0025" (.005" FULL INDICATOR READING) TYP

INSPECTION HOLE THRU ONE (1) WALL ONLY. CENTERLINE SHALL LIE IN A DIRECTION PARALLEL TO THE PIVOT CENTERLINE OF THE YOKE EAR HOLES WITHIN 1° TYP

NOTE(S), UNLESS OTHERWISE SPECIFIED.

(1) REF., FINISH (ALL EXTERNAL STEEL COMPONENTS): CADMIUM PLATE I.A.W. SAE-AMS-QQ-P-416, TYPE II (YELLOW CHROMATE), CLASS 2.

(2) IDENTIFICATION: ELECTRO ETCH or LASER MARK ASSEMBLY w/ NAME, PART NUMBER, MANUFACTURER CAGE CODE, DATE OF MANUFACTURE (MO/YR), & BELDEN JOB NUMBER APPROXIMATELY WHERE SHOWN.

BELDEN
MS20271B14
1R6X2 MO/YR
(JOB No.)

(3) LUBRICATION: LUBRICANT TO CONSIST OF A UNIFORM MIXTURE OF GREASE CONFORMING TO MIL-PRF-32014 or MIL-PRF-81322 WITH A 6% ±1/2% BY WEIGHT ADDITIVE CONFORMING TO SAE-AMS-M-7866 LUBRICANT, MOLYBDENUM DISULFIDE.

(4) CLOSURE (BOOT): MUST BE RESISTANT TO OZONE CRACKING AND BE ABLE TO RETAIN THE LUBRICANT AT ALL TEMPERATURES BETWEEN -67° F (-55° C) AND 160° F (71° C) DURING OPERATION.

(5) ANGULARITY: UNIVERSAL JOINT MUST BE OPERABLE TO A MINIMUM ANGLE OF 30°.

(6) TORSIONAL PLAY (BACKLASH): .36° ± 2% @ 8 ± 2% IN-LBS.

(7) END PLAY: .0027" TOTAL WITH A 5 LB LOAD APPLIED IN BOTH DIRECTIONS WITHOUT LUBRICANT.

(8) SIDE PLAY: .0055" TOTAL WITH A 5 LB LOAD APPLIED IN BOTH DIRECTIONS WITHOUT LUBRICANT.

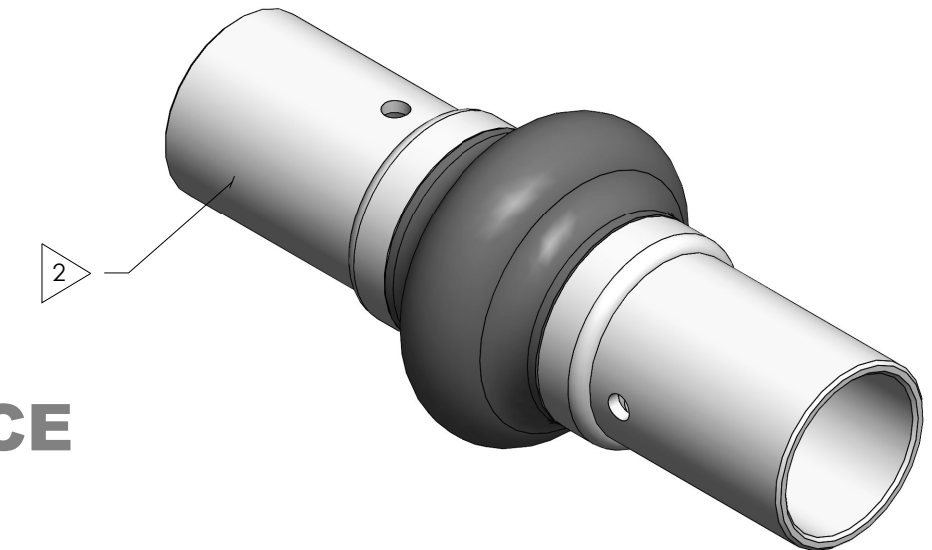
(9) ULTIMATE TORQUE: 3,000 IN-LBS, ±2%.

(10) ULTIMATE TENSILE OR COMPRESSIVE STRENGTH: 3,500 LBS, ±2%.

(11) DESIGNED I.A.W. MIL-DTL-6193, CLASS 2, TYPE B, & MS20271.

(12) FLAG NOTES **A**, **B**, **C** ... CORRESPOND TO DIMENSIONS AS LABELED ON SPECIFICATION MS20271.

FOR REFERENCE ONLY



DO NOT SCALE DRAWING

<small>UNLESS OTHERWISE SPECIFIED: CHAMFER ALL HOLES BREAK ALL SHARP CORNERS DE-BURR ALL FEATURES</small>	<small>STANDARD TOLERANCES, UNLESS OTHERWISE SPECIFIED</small> DIMENSIONS ARE IN INCHES (mm) ANGULAR MACHINED: ±1.0° FRACTIONAL: ±.015" TWO PLACE DECIMAL: ±.010" THREE PLACE DECIMAL: ±.005" FOUR PLACE DECIMAL: ±.0005" CONCENTRICITY: .0025" T.I.R.	<small>MATERIAL:</small> ALLOY STEEL <small>HEAT TREAT:</small> SEE DETAIL DRAWINGS <small>FINISH/COATING:</small> CADMIUM PLATED	<small>INITIALS</small>	<small>DATE</small>	<small>Belden Universal</small> www.beldenuniversal.com ASSEMBLY, UNIVERSAL JOINT, MIL-STD
			<small>DRAWN</small> RNK	<small>DATE</small> 25SEP98	
<small>TURNED SURFACES: 63/125</small> <small>MILLED SURFACES: 32</small>			<small>ENG APPR.</small> RNK	<small>DATE</small> 02MAR10	
			<small>MFG APPR.</small>		
			<small>QUALITY</small>		
			<small>COMMENTS:</small>		
<small>PROPRIETARY AND CONFIDENTIAL THE INFORMATION CONTAINED IN THIS DRAWING IS THE SOLE PROPERTY OF BELDEN UNIVERSAL. ANY REPRODUCTION IN PART OR AS A WHOLE WITHOUT THE WRITTEN PERMISSION OF BELDEN UNIVERSAL IS PROHIBITED.</small>					
<small>ALL HOLES TO BE LOCATED ON CENTERLINE (Q) WITHIN .005" T.I.R. INTERPRET GEOMETRIC TOLERANCES I.A.W. ASME Y14.5</small>					
					<small>SIZE DWG. NO.</small> B MS20271B14
					<small>SCALE: 2.5:1 WEIGHT (Lbs): 0.303 SHEET 1 OF 2</small>