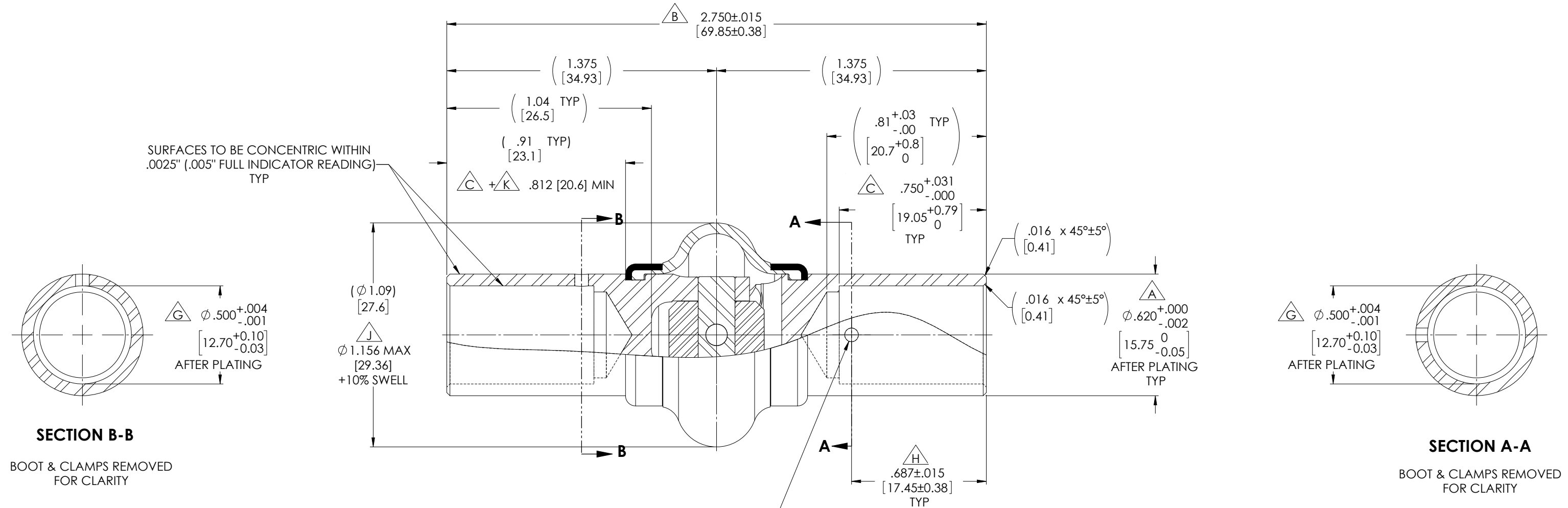


REVISIONS				
ZONE	REV.	DESCRIPTION	DATE	APPROVED



**SECTION B-B**

BOOT & CLAMPS REMOVED FOR CLARITY

**SECTION A-A**

BOOT & CLAMPS REMOVED FOR CLARITY

NOTE(S), UNLESS OTHERWISE SPECIFIED.

(1) REF., FINISH, ALL EXTERNAL STEEL COMPONENTS: CADMIUM PLATED I.A.W. SAE-AMS-QQ-P-416, TYPE II, CLASS 2.

2 IDENTIFICATION: ELECTRO ETCH or LASER MARK ASSEMBLY w/ NAME, PART NUMBER, MANUFACTURER CAGE CODE, DATE OF MFR & BELDEN JOB NUMBER APPROXIMATELY WHERE SHOWN.

BELDEN  
MS20271B10  
1R6X2 MO/YR  
(JOB No.)

(3) LUBRICATION: LUBRICANT TO CONSIST OF A UNIFORM MIXTURE OF GREASE CONFORMING TO MIL-PRF-32014 or MIL-PRF-81322 WITH A 6 ± 0.5 % BY WEIGHT ADDITIVE OF MOLYBDENUM DISULFIDE LUBRICANT CONFORMING TO SAE-AMS-M-7866.

(4) LUBRICANT RETAINING COVER (BOOT): MUST BE RESISTANT TO OZONE CRACKING AND BE ABLE TO RETAIN THE LUBRICANT AT ALL TEMPERATURES BETWEEN -67° F [-55° C] AND +160° F [+71° C] DURING OPERATION.

(5) ANGULARITY: MUST BE OPERABLE TO A MINIMUM ANGLE OF 30°.

(6) MAXIMUM TORSIONAL PLAY (BACKLASH) LIMIT: .50° ± 2% @ 4 Lb-In ± 2%.

(7) MAXIMUM ALLOWABLE END PLAY: .0027" [0.069mm] TOTAL WITH A 5 LB [2.27kg] LOAD APPLIED IN BOTH DIRECTIONS WITHOUT LUBRICANT OR BOOT.

(8) MAXIMUM ALLOWABLE SIDE PLAY: .0055" [0.140mm] TOTAL WITH A 5 LB [2.27kg] LOAD APPLIED IN BOTH DIRECTIONS WITHOUT LUBRICANT OR BOOT.

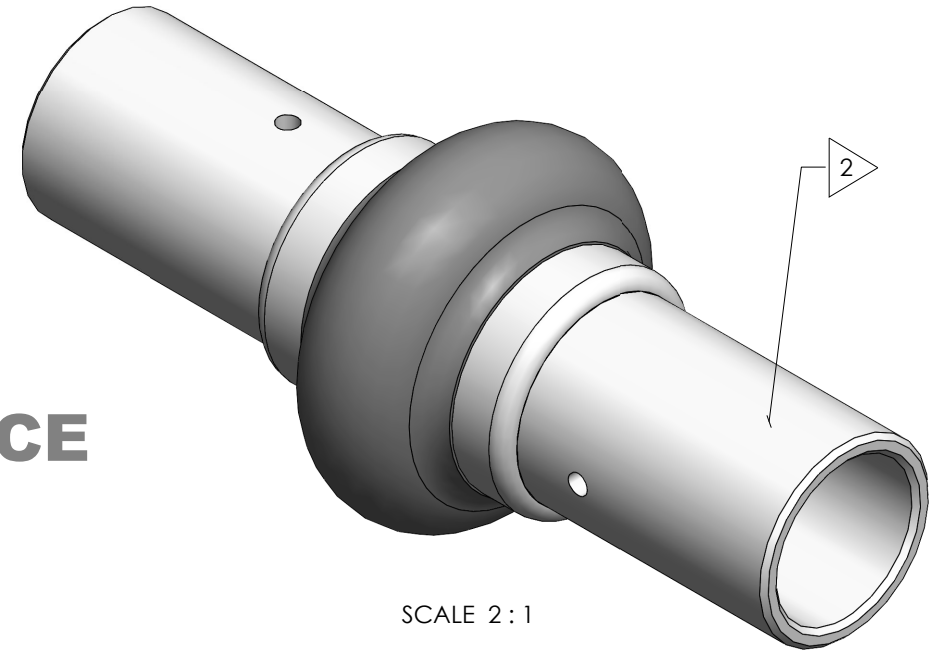
(9) REF., STATIC TORQUE: 1,080 Lb-In [122.02 N-m] ± 2%.

(10) REF., TENSILE OR COMPRESSIVE STRENGTH: 1,500 LBS [680.39 kg] ± 2%.

(11) DESIGNED I.A.W. MIL-DTL-6193, CLASS 2, TYPE B & MS20271.

(12) FLAG NOTES A, B, C ... CORRESPOND TO DIMENSIONS AS LABELED ON SPECIFICATION MS20271.

**FOR  
REFERENCE  
ONLY**



SCALE 2 : 1

DO NOT SCALE DRAWING

UNLESS OTHERWISE SPECIFIED: CHAMFER ALL HOLES BREAK ALL SHARP CORNERS DE-BURR ALL FEATURES	STANDARD TOLERANCES, UNLESS OTHERWISE SPECIFIED DIMENSIONS ARE IN INCHES (mm)	MATERIAL:	INITIALS	DATE	Belden Universal www.beldenuniversal.com
		ALLOY STEEL	DRAWN	RNK	
TURNED SURFACES: $\checkmark$ <sub>63</sub> MILLED SURFACES: $\checkmark$ <sub>125</sub>	ANGULAR MACHINED: ±1.0° FRACTIONAL: ±.015" TWO PLACE DECIMAL: ±.010" THREE PLACE DECIMAL: ±.005" FOUR PLACE DECIMAL: ±.0005" CONCENTRICITY: .0025" T.I.R.	HEAT TREAT:	CHECKED	RNK	08FEB96
		SEE DETAIL DRAWINGS	ENG APPR.	RNK	08FEB96
PROPRIETARY AND CONFIDENTIAL THE INFORMATION CONTAINED IN THIS DRAWING IS THE SOLE PROPERTY OF BELDEN UNIVERSAL. ANY REPRODUCTION IN PART OR AS A WHOLE WITHOUT THE WRITTEN PERMISSION OF BELDEN UNIVERSAL IS PROHIBITED.	ALL HOLES TO BE LOCATED ON CENTERLINE (Q) WITHIN .005" T.I.R.	FINISH/COATING: REF., CADMIUM PLATED	MFG APPR.	QUALITY	TITLE: <b>ASSEMBLY, UNIVERSAL JOINT (MIL-STD)</b>
			COMMENTS:	SIZE DWG. NO.	REV
				<b>B</b>	MS20271B10
				SCALE: 4:1	WEIGHT (Lbs): 0.134
					SHEET 1 OF 2