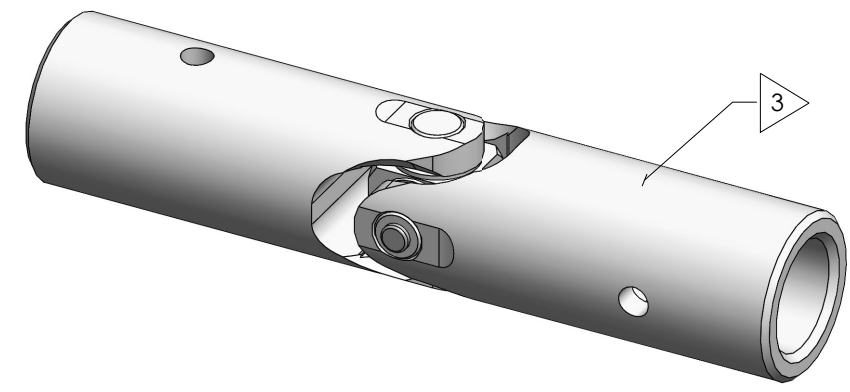
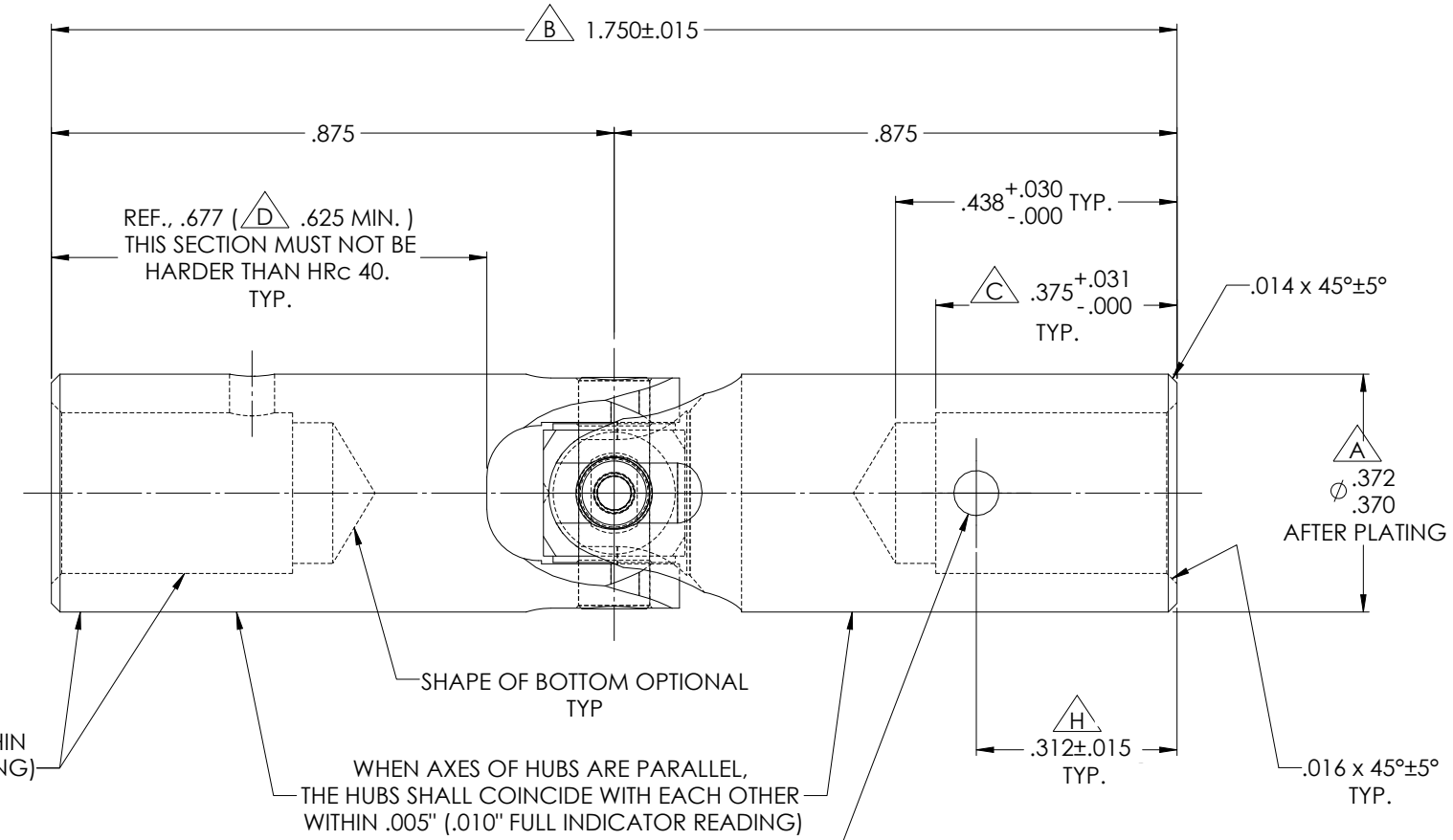
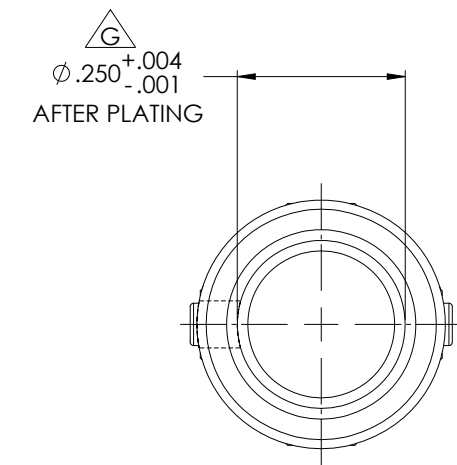
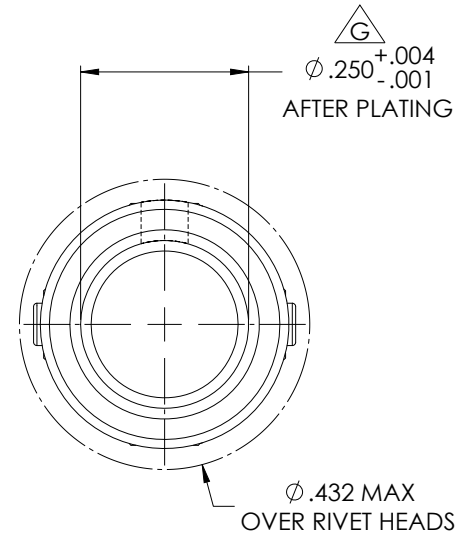


REVISIONS				
ZONE	REV.	DESCRIPTION	DATE	APPROVED



SCALE 5 : 1



SURFACES TO BE CONCENTRIC WITHIN .0025" (.005" FULL INDICATOR READING) TYP

WHEN AXES OF HUBS ARE PARALLEL, THE HUBS SHALL COINCIDE WITH EACH OTHER WITHIN .005" (.010" FULL INDICATOR READING)

REF., .677 (D) .625 MIN.) THIS SECTION MUST NOT BE HARDER THAN HRC 40. TYP.

NOTES(s), UNLESS OTHERWISE SPECIFIED.

- (1) UNIVERSAL JOINT DESIGNED AND TESTED I.A.W. MIL-DTL-6193, CLASS 1 & MS20270, TYPE B.
- (2) REFERENCE, FINISH: ALL EXTERNAL STEEL COMPONENTS, EXCEPT RIVET; CADMIUM PLATED I.A.W. SAE AMS-QQ-P-416, TYPE II (YELLOW CHROMATE), CLASS 2.
- 3 IDENTIFICATION: ELECTRO ETCH or LASER MARK ASSEMBLY w/ NAME, PART NUMBER, MANUFACTURER CAGE CODE, DATE OF MANUFACTURE, & BELDEN JOB NUMBER.

BELDEN
MS20270B6
1R6X2 (MO/YR)
(JOB No.)

- (4) LUBRICATION: LUBRICATE WITH OIL CONFORMING TO MIL-PRF-7870.
- (5) ANGULARITY: MUST BE OPERABLE TO A MINIMUM ANGLE OF 30°.
- (6) MAXIMUM ALLOWABLE TORSIONAL PLAY (BACKLASH): 1.00° (±2%) @ 4 IN-LBS (±2%).
- (7) MAXIMUM ALLOWABLE END PLAY: .0035" TOTAL WITH A 5 LB LOAD APPLIED IN BOTH DIRECTIONS WITHOUT LUBRICANT.
- (8) MAXIMUM ALLOWABLE SIDE PLAY: .0080" TOTAL WITH A 5 LB LOAD APPLIED IN BOTH DIRECTIONS WITHOUT LUBRICANT.
- (9) ULTIMATE STATIC TORQUE: 175 IN-LBS (±2%).
- (10) ULTIMATE TENSILE OR COMPRESSIVE STRENGTH: 200 LBS (±2%).
- (11) DYNAMIC TORQUE ENDURANCE TEST: 26 IN-LBS (±2%) AT 120 RPM AND A 15° OPERATING ANGLE FOR 2 HRS.
- (12) FLAG NOTES A B C ... CORRESPOND TO DIMENSIONS AS LABELED ON SPECIFICATION MS20270.

FOR REFERENCE ONLY

DO NOT SCALE DRAWING

UNLESS OTHERWISE SPECIFIED: CHAMFER ALL HOLES BREAK ALL SHARP CORNERS DE-BURR ALL FEATURES	STANDARD TOLERANCES, UNLESS OTHERWISE SPECIFIED DIMENSIONS ARE IN INCHES (mm)	MATERIAL: ALLOY STEEL	INITIALS	DATE	Belden Universal www.beldenuniversal.com
			DRAWN	CJM	
TURNED SURFACES: \checkmark_{63} MILLED SURFACES: \checkmark_{125}	ANGULAR MACHINED: ±1.0° FRACTIONAL: ±.015" TWO PLACE DECIMAL: ±.010" THREE PLACE DECIMAL: ±.005" FOUR PLACE DECIMAL: ±.0005" CONCENTRICITY: .0025" T.I.R.	HEAT TREAT: SEE DETAIL DRAWINGS	CHECKED	RNK	11MAY06
			ENG APPR.	RNK	11MAY06
PROPRIETARY AND CONFIDENTIAL THE INFORMATION CONTAINED IN THIS DRAWING IS THE SOLE PROPERTY OF BELDEN UNIVERSAL. ANY REPRODUCTION IN PART OR AS A WHOLE WITHOUT THE WRITTEN PERMISSION OF BELDEN UNIVERSAL IS PROHIBITED.	ALL HOLES TO BE LOCATED ON CENTERLINE (Q) WITHIN .005" T.I.R. INTERPRET GEOMETRIC TOLERANCES I.A.W. ASME Y14.5	FINISH/COATING: CADMIUM PLATED	MFG APPR.	JRP	04MAR16
			QUALITY	AMC	07MAR16
COMMENTS:			SIZE	DWG. NO.	REV
			B	MS20270B6	
			SCALE: 7:1	WEIGHT (Lbs): 0.036	SHEET 1 OF 2