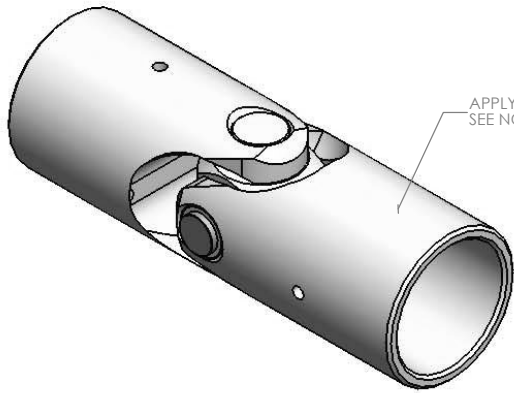


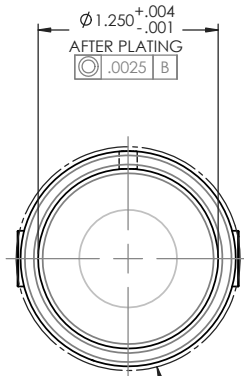
FOR REFERENCE ONLY

REVISIONS				
ZONE	REV.	DESCRIPTION	DATE	APPROVED

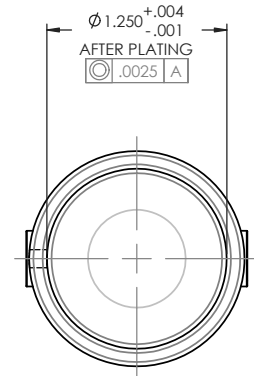
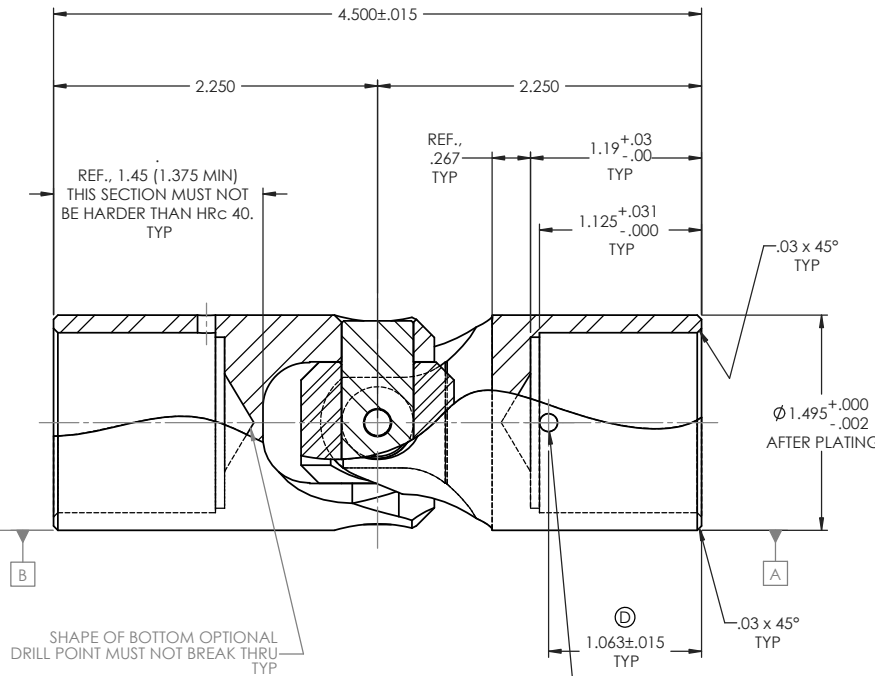


APPLY I.D. HERE
SEE NOTES

SCALE 1.25 : 1



$\phi 1.555$ MAX OVER RIVET HEADS



NOTES(S), UNLESS OTHERWISE SPECIFIED.

- (1) UNIVERSAL JOINT DESIGNED AND TESTED I.A.W. MIL-DTL-6193, CLASS 1 AND MS20270, TYPE B.
- (2) REFERENCE, FINISH: ALL EXTERNAL STEEL COMPONENTS, EXCEPT RIVET; CADMIUM PLATED I.A.W. SAE-AMS-QQ-P-416, TYPE II (YELLOW CHROMATE), CLASS 2.
- (3) IDENTIFICATION: MARK (ELECTRO-ETCH) ASSEMBLY w/ NAME, PART NUMBER, MANUFACTURER CAGE CODE, DATE OF MANUFACTURE (MO/YR), & BELDEN JOB No. I.A.W. MIL-STD-130 AS SHOWN.
- (4) LUBRICATION: LUBRICATE WITH OIL CONFORMING TO MIL-PRF-7870.
- (5) ANGULARITY: MUST BE OPERABLE TO A MINIMUM ANGLE OF 30°.
- (6) MAXIMUM ALLOWABLE TORSIONAL PLAY (BACKLASH): 0.27° (± 2%) @ 8 IN-LBS (± 2%).
- (7) MAXIMUM ALLOWABLE END PLAY: .0035" TOTAL WITH A 5 LB LOAD APPLIED IN BOTH DIRECTIONS WITHOUT LUBRICANT.
- (8) MAXIMUM ALLOWABLE SIDE PLAY: .0080" TOTAL WITH A 5 LB LOAD APPLIED IN BOTH DIRECTIONS WITHOUT LUBRICANT.
- (9) ULTIMATE (BREAKING) STATIC TORQUE: 7,500 (± 2%) IN-LBS.
- (10) ULTIMATE TENSILE OR COMPRESSIVE STRENGTH: 1,100 LBS (± 2%).
- (11) DYNAMIC TORQUE ENDURANCE TEST: 1,125 IN-LBS (± 2%) AT 120 RPM AND A 15° ANGLE FOR 2 HRS.

BELDEN INC
MS20270B24
1R6X2 (MO/YR)
(JOB No.)

©

UNLESS OTHERWISE SPECIFIED
CHAMFER ALL HOLES
BREAK ALL SHARP CORNERS
DE-BURR ALL FEATURES

TURNED SURFACES: $\frac{63}{125}$
 MILLED SURFACES: $\frac{63}{125}$

PROPRIETARY AND CONFIDENTIAL
 THE INFORMATION CONTAINED IN THIS DRAWING IS THE SOLE PROPERTY OF BELDEN INCORPORATED. ANY REPRODUCTION IN PART OR AS A WHOLE WITHOUT THE WRITTEN PERMISSION OF BELDEN INCORPORATED IS PROHIBITED.

STANDARD TOLERANCES, UNLESS OTHERWISE SPECIFIED

DIMENSIONS ARE IN INCHES [mm]

ANGULAR MACHINED: ±1.0°
 FRACTIONAL: ±.015"
 TWO PLACE DECIMAL: ±.010"
 THREE PLACE DECIMAL: ±.005"
 FOUR PLACE DECIMAL: ±.0005"
 CONCENTRICITY: .0025" T.I.R.

ALL HOLES TO BE LOCATED ON CENTERLINE (±) WITHIN .005" T.I.R.
 INTERPRET GEOMETRIC TOLERANCES I.A.W. ANSI Y14.5M-1982

DO NOT SCALE DRAWING

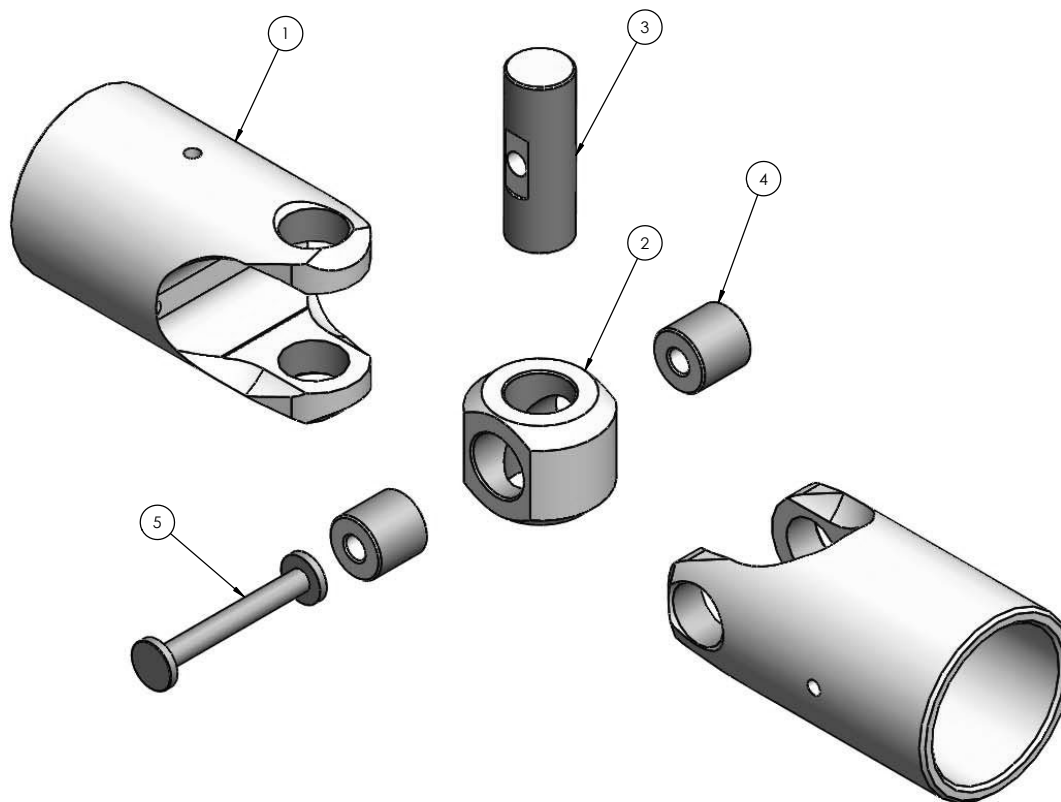
MATERIAL	ALLOY STEEL
HEAT TREAT	SEE DETAIL DRAWINGS
FINISH	CADMIUM PLATED
NAME	SFM
DATE	01AUG07
CHECKED	RNK 18MAY10
ENG APPR.	RNK 18MAY10
MFG APPR.	
QA:	
COMMENTS:	

BELDEN INCORPORATED www.beldenuniversal.com		
TITLE: ASSEMBLY, UNIVERSAL JOINT, (MIL-STD)		
SIZE	DWG. NO.	REV
C	MS20270B24	
SCALE: 3:2	WT (Lbs): 1.118	SHEET 1 OF 2

BOM Table ©			
ITEM NO.	PART NUMBER	DESCRIPTION	MS20270B24/ QTY.
1	MS20270B24-Y	YOKE	2
2	MS20271B24-2A	BLOCK	1
3	MS20271B24-5A	LONG PIN	1
4	MS20271B24-4A	SHORT PIN	2
5	HS1500-3A	RIVET	1

REVISIONS				
ZONE	REV.	DESCRIPTION	DATE	APPROVED
-	-	See Sheet1	-	-

FOR REFERENCE ONLY



©

DO NOT SCALE DRAWING

UNLESS OTHERWISE SPECIFIED CHAMFER ALL HOLES BREAK ALL SHARP CORNERS DE-BURR ALL FEATURES TURNED SURFACES: $\sqrt{63}$ MILLED SURFACES: $\sqrt{125}$ PROPRIETARY AND CONFIDENTIAL THE INFORMATION CONTAINED IN THIS DRAWING IS THE SOLE PROPERTY OF BELDEN INCORPORATED. ANY REPRODUCTION IN PART OR AS A WHOLE WITHOUT THE WRITTEN PERMISSION OF BELDEN INCORPORATED IS PROHIBITED.	STANDARD TOLERANCES, UNLESS OTHERWISE SPECIFIED DIMENSIONS ARE IN INCHES [mm]	MATERIAL: ALLOY STEEL	NAME: SFM DATE: 01AUG07	BELDEN INCORPORATED www.beldenuniversal.com ASSEMBLY, UNIVERSAL JOINT, (MIL-STD)	
	ANGULAR MACHINED: $\pm 1.0^\circ$ FRACTIONAL: ± 0.015 TWO PLACE DECIMAL: ± 0.010 THREE PLACE DECIMAL: ± 0.005 FOUR PLACE DECIMAL: ± 0.0005 CONCENTRICITY: 0.0025 T.I.R.	HEAT TREAT: SEE DETAIL DRAWINGS	CHECKED: RNK 18MAY10 ENG APPR: RNK 18MAY10 MFG APPR: Q.A.: COMMENTS:		TITLE:
	ALL HOLES TO BE LOCATED ON CENTERLINE (C) WITHIN .005" T.I.R. INTERPRET GEOMETRIC TOLERANCES I.A.W. ANSI Y14.5M-1992	FINISH: CADMIUM PLATED	SIZE: C DWG. NO.: MS20270B24 SCALE: 3:2 WT (Lbs): 1.118 SHEET 2 OF 2		REV:
	FORM SPEC 6.14		MS20270B24.SLDDRW		2/6/2014 5:21 PM