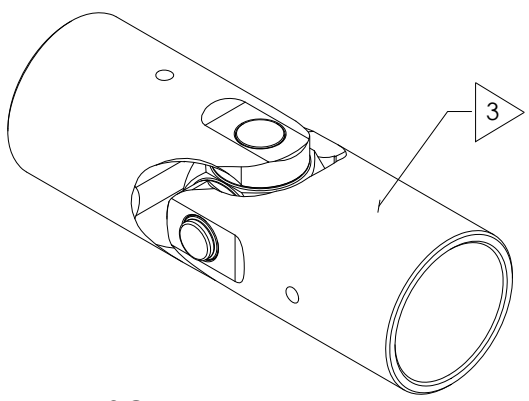
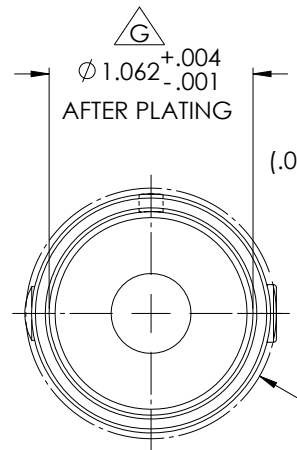


REVISIONS				
ZONE	REV.	DESCRIPTION	DATE	APPROVED

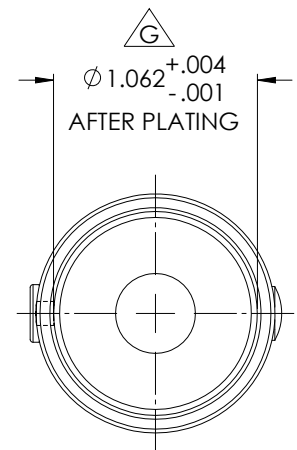
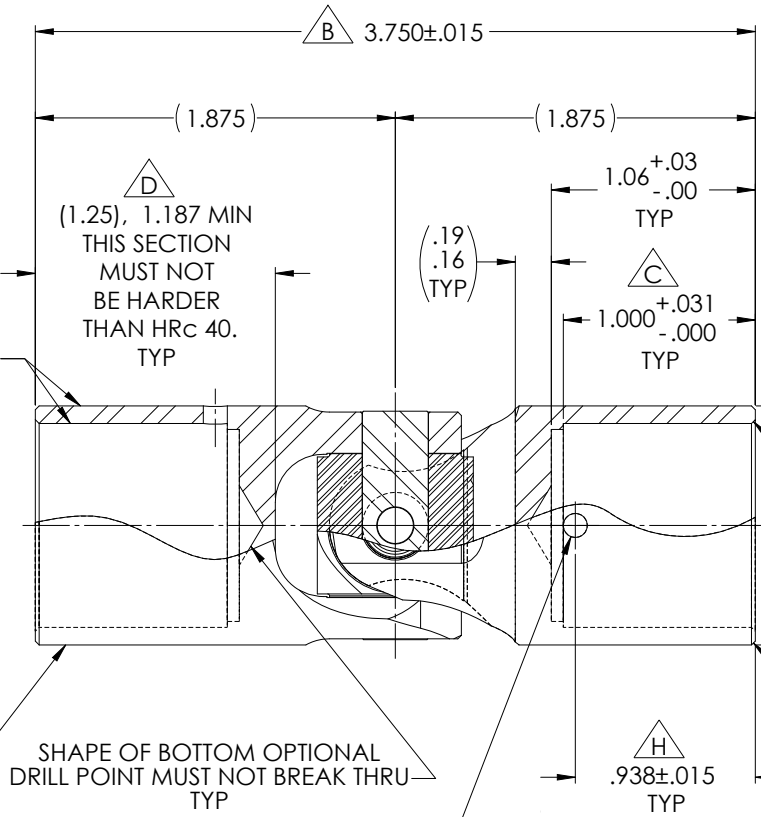


SCALE 1.5 : 1



SURFACES TO BE CONCENTRIC WITHIN .0025" (.005" FULL INDICATOR READING) TYP

WHEN AXES OF HUBS ARE PARALLEL, THE HUBS SHALL COINCIDE WITH EACH OTHER WITHIN .005" (.010" FULL INDICATOR READING)



NOTE(S), UNLESS OTHERWISE SPECIFIED.

- (1) UNIVERSAL JOINT DESIGNED AND TESTED I.A.W. MIL-DTL-6193, CLASS 1 AND MS20270, TYPE B.
- (2) REFERENCE, FINISH: ALL EXTERNAL STEEL COMPONENTS, EXCEPT RIVET; CADMIUM PLATED I.A.W. SAE-AMS-QQ-P-416, TYPE II (YELLOW CHROMATE), CLASS 2.
- (3) IDENTIFICATION: MARK (ELECTRO-ETCH) or LASER MARK ASSEMBLY w/ NAME, PART NUMBER, MANUFACTURER CAGE CODE, DATE OF MANUFACTURE (MO/YR), & BELDEN JOB No. I.A.W. MIL-STD-130 AS SHOWN.
 BELDEN
 MS20270B20
 1R6X2 (MO/YR)
 (JOB No.)
- (4) LUBRICATION: LUBRICATE WITH OIL CONFORMING TO MIL-PRF-7870.
- (5) ANGULARITY: MUST BE OPERABLE TO A MINIMUM ANGLE OF 30°.
- (6) MAXIMUM ALLOWABLE TORSIONAL PLAY (BACKLASH): 0.32° (± 2%) @ 8 (± 2%) IN-LBS.
- (7) MAXIMUM ALLOWABLE END PLAY: .0035" TOTAL WITH A 5 LB LOAD APPLIED IN BOTH DIRECTIONS WITHOUT LUBRICANT.
- (8) MAXIMUM ALLOWABLE SIDE PLAY: .0080" TOTAL WITH A 5 LB LOAD APPLIED IN BOTH DIRECTIONS WITHOUT LUBRICANT.
- (9) ULTIMATE (BREAKING) STATIC TORQUE: 5,000 IN-LBS (± 2%).
- (10) ULTIMATE TENSILE OR COMPRESSIVE STRENGTH: 800 LBS (± 2%).
- (11) DYNAMIC TORQUE ENDURANCE TEST: 750 IN-LBS (± 2%) AT 120 RPM AND A 15° ANGLE FOR 2 HOURS.
- (12) FLAG NOTES (A), (B), (C) ... CORRESPOND TO DIMENSIONS AS LABELED ON SPECIFICATION MS20270.

INSPECTION HOLE THRU ONE (1) WALL ONLY. CENTERLINE SHALL LIE IN A DIRECTION PARALLEL TO THE PIVOT CENTERLINE OF THE YOKE EAR HOLES WITHIN 1° TYP

**FOR
REFERENCE
ONLY**

DO NOT SCALE DRAWING

UNLESS OTHERWISE SPECIFIED CHAMFER ALL HOLES BREAK ALL SHARP CORNERS DE-BURR ALL FEATURES TURNED SURFACES: $\sqrt{63}$ MILLED SURFACES: $\sqrt{125}$ PROPRIETARY AND CONFIDENTIAL THE INFORMATION CONTAINED IN THIS DRAWING IS THE SOLE PROPERTY OF BELDEN UNIVERSAL. ANY REPRODUCTION IN PART OR AS A WHOLE WITHOUT THE WRITTEN PERMISSION OF BELDEN UNIVERSAL IS PROHIBITED.	STANDARD TOLERANCES, UNLESS OTHERWISE SPECIFIED DIMENSIONS ARE IN INCHES (mm) ANGULAR MACHINED: ±1.0° FRACTIONAL: ±.015" TWO PLACE DECIMAL: ±.010" THREE PLACE DECIMAL: ±.005" FOUR PLACE DECIMAL: ±.0005" CONCENTRICITY: .0025" T.I.R.	MATERIAL: ALLOY STEEL HEAT TREAT: SEE DETAIL DRAWINGS FINISH: CADMIUM PLATED	INITIALS: SFM DATE: 01AUG07 CHECKED: RNK DATE: 18MAY10 ENG APPR: RNK DATE: 18MAY10 MFG APPR: [] QC APPR: []	Belden Universal www.beldenuniversal.com TITLE: ASSEMBLY, UNIVERSAL JOINT, MIL-STD
	ALL HOLES TO BE LOCATED ON CENTERLINE (C) WITHIN .005" T.I.R. INTERPRET GEOMETRIC TOLERANCES I.A.W. ASME Y14.5	COMMENTS:	SIZE: A DWG. NO.: MS20270B20 SCALE: 2:1 WT (Lbs): 0.611 SHEET 1 OF 2	REV: