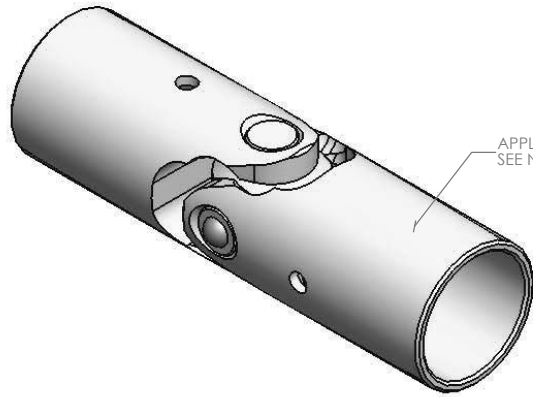
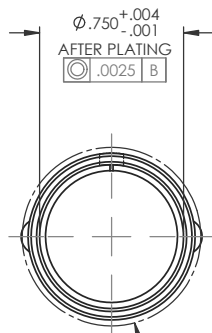


# FOR REFERENCE ONLY

REVISIONS				
ZONE	REV.	DESCRIPTION	DATE	APPROVED

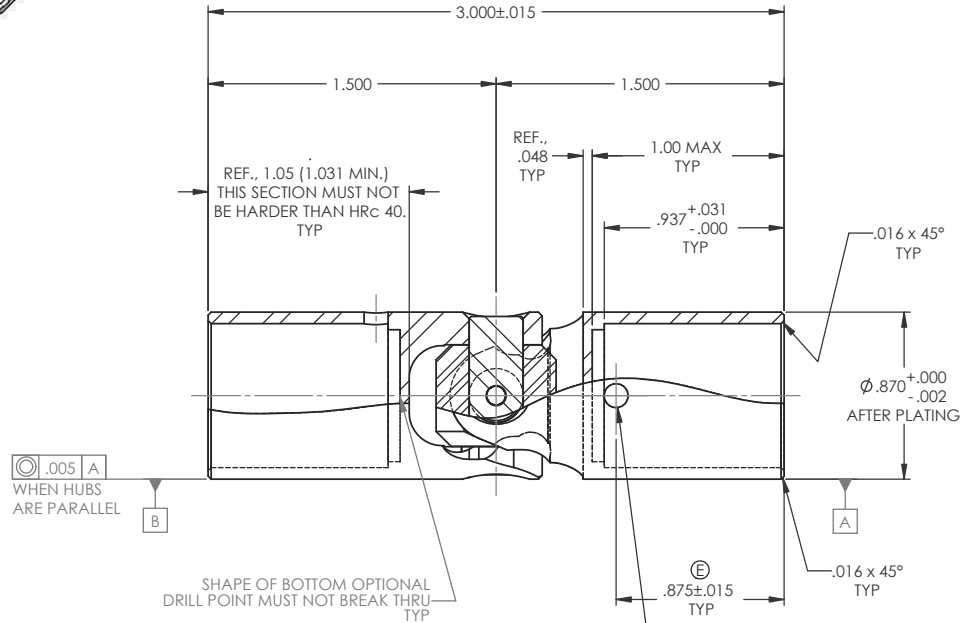


APPLY I.D. HERE  
SEE NOTES



$\phi .750^{+.004}_{-.001}$   
AFTER PLATING  
 $\text{◎}</math> .0025 | B$

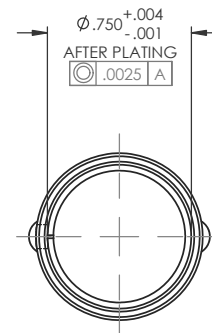
$\phi .930$  MAX  
OVER RIVET HEADS | E



$\text{◎}</math> .005 | A  
WHEN HUBS  
ARE PARALLEL | B$

SHAPE OF BOTTOM OPTIONAL  
DRILL POINT MUST NOT BREAK THRU  
TYP

$\phi .125^{+.004}_{-.001}$  INSPECTION HOLE THRU ONE (1) WALL ONLY.  
CENTERLINE SHALL LIE IN A DIRECTION PARALLEL TO THE  
PIVOT CENTERLINE OF THE YOKE EAR HOLES WITHIN 1°  
TYP



$\phi .750^{+.004}_{-.001}$   
AFTER PLATING  
 $\text{◎}</math> .0025 | A$

NOTE(S), UNLESS OTHERWISE SPECIFIED.

- (1) UNIVERSAL JOINT DESIGNED AND TESTED I.A.W. MIL-DTL-6193, CLASS 1 AND MS20270, TYPE B.
- (2) REFERENCE, FINISH: ALL EXTERNAL STEEL COMPONENTS, EXCEPT RIVET: CADMIUM PLATED I.A.W. SAE-AMS-QQ-P-416, TYPE II (YELLOW CHROMATE), CLASS 2.
- (3) IDENTIFICATION: MARK (ELECTRO ETCH) ASSEMBLY w/ NAME, PART NUMBER, MANUFACTURER CAGE CODE, DATE OF MANUFACTURE (MO/YR), & BELDEN JOB No. I.A.W. MIL-STD-130 AS SHOWN.
- (4) LUBRICATION: LUBRICATE WITH OIL CONFORMING TO MIL-PRF-7870.
- (5) ANGULARITY: UNIVERSAL JOINT MUST BE OPERABLE TO A MINIMUM ANGLE OF 30°.
- (6) MAXIMUM ALLOWABLE TORSIONAL PLAY (BACKLASH):  $0.46^\circ \pm (\pm 2\%) @ 8 (\pm 2\%)$  IN-LBS.
- (7) MAXIMUM ALLOWABLE END PLAY: .0035" TOTAL WITH A 5 LB LOAD APPLIED IN BOTH DIRECTIONS WITHOUT LUBRICANT.
- (8) MAXIMUM ALLOWABLE SIDE PLAY: .0080" TOTAL WITH A 5 LB LOAD APPLIED IN BOTH DIRECTIONS WITHOUT LUBRICANT.
- (9) ULTIMATE STATIC TORQUE: 1,750 IN-LBS ( $\pm 2\%$ ).
- (10) ULTIMATE TENSILE OR COMPRESSIVE STRENGTH: 500 LBS ( $\pm 2\%$ ).
- (11) DYNAMIC TORQUE ENDURANCE TEST: 262 IN-LBS ( $\pm 2\%$ ) AT 120 RPM AND A 15° OPERATING ANGLE FOR 2 HRS.

BELDEN INC  
MS20270B14  
1R6X2 (MO/YR)  
(JOB No.)

DO NOT SCALE DRAWING

UNLESS OTHERWISE SPECIFIED CHAMFER ALL HOLES BREAK ALL SHARP CORNERS DE-BURR ALL FEATURES  TURNED SURFACES: $\checkmark$ MILLED SURFACES: $\checkmark$  PROPRIETARY AND CONFIDENTIAL THE INFORMATION CONTAINED IN THIS DRAWING IS THE SOLE PROPERTY OF BELDEN INC OR P OR A T.E.D. ANY REPRODUCTION IN PART OR AS A WHOLE WITHOUT THE WRITTEN PERMISSION OF BELDEN INC IS PROHIBITED.	STANDARD TOLERANCES, UNLESS OTHERWISE SPECIFIED  DIMENSIONS ARE IN INCHES [mm]  ANGULAR MACHINED: $\pm 1.0^\circ$ FRACTIONAL: $\pm .015$ TWO PLACE DECIMAL: $\pm .010$ THREE PLACE DECIMAL: $\pm .005$ FOUR PLACE DECIMAL: $\pm .0005$ CONCENTRICITY: .0025 T.I.R.	MATERIAL: ALLOY STEEL  HEAT TREAT: SEE DETAIL DRAWINGS  FINISH: CADMIUM PLATED	NAME: RNK DATE: 06FEB01  CHECKED: RNK DATE: 06FEB01  ENG APPR: RNK DATE: 06FEB01  G.A.:  COMMENTS:	BELDEN INCORPORATED www.beldenuniversal.com  TITLE: ASSEMBLY, UNIVERSAL JOINT, (MIL-STD)
	ALL HOLES TO BE LOCATED ON CENTERLINE (±) WITHIN .005" T.I.R. INTERPRET GEOMETRIC TOLERANCES I.A.W. ANSI Y14.5M-1982	SIZE DWG. NO. REV C MS20270B14	SCALE: 2:1 WT (Lbs): 0.200 SHEET 1 OF 2	