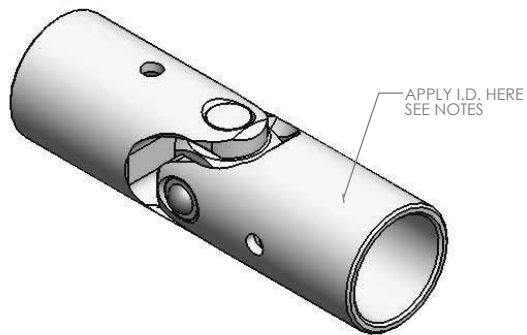
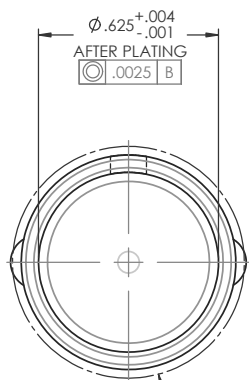


FOR REFERENCE ONLY

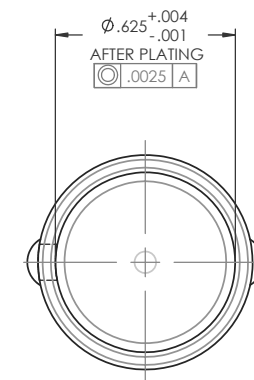
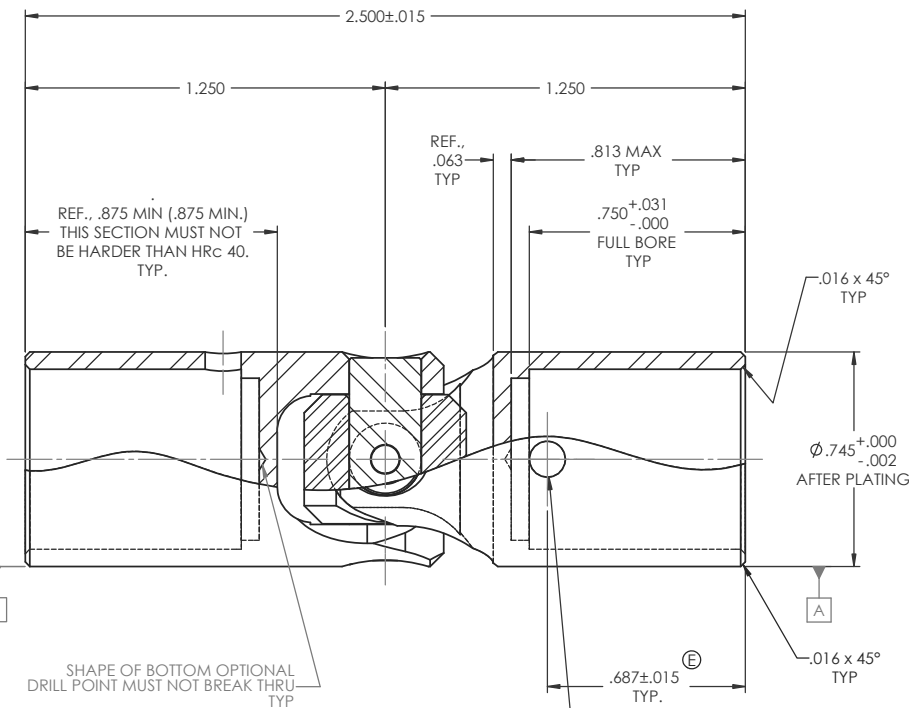
REVISIONS				
ZONE	REV.	DESCRIPTION	DATE	APPROVED



SCALE 2 : 1



$\phi .805$ MAX OVER RIVET HEADS E



NOTES(s). UNLESS OTHERWISE SPECIFIED.

- (1) UNIVERSAL JOINT DESIGNED AND TESTED I.A.W. MIL-DTL-6193, CLASS 1, AND MS20270, TYPE B.
- (2) REFERENCE, FINISH: ALL EXTERNAL STEEL COMPONENTS (EXCEPT RIVET); CADMIUM PLATED I.A.W. SAE AMS-QQ-P-416, TYPE II (YELLOW CHROMATE), CLASS 2.
- (3) IDENTIFICATION: MARK (ELECTRO-ETCH) ASSEMBLY w/ NAME, PART NUMBER, MANUFACTURER CAGE CODE, DATE OF MANUFACTURE (MO/YR), & BELDEN JOB No. I.A.W. MIL-STD-130 AS SHOWN.

BELDEN INC
MS20270B12
1R6X2 (MO/YR)
(JOB No.)

- (4) LUBRICATION: LUBRICATE WITH OIL CONFORMING TO MIL-PRF-7870.
- (5) ANGULARITY: MUST BE OPERABLE TO A MINIMUM ANGLE OF 30°.
- (6) MAXIMUM ALLOWABLE TORSIONAL PLAY (BACKLASH): 0.53° (± 2%) @ 4 IN-LBS (± 2%).
- (7) MAXIMUM ALLOWABLE END PLAY: .0035" TOTAL WITH A 5 LB LOAD APPLIED IN BOTH DIRECTIONS WITHOUT LUBRICANT.
- (8) MAXIMUM ALLOWABLE SIDE PLAY: .0080" TOTAL WITH A 5 LB LOAD APPLIED IN BOTH DIRECTIONS WITHOUT LUBRICANT.
- (9) ULTIMATE (BREAKING) STATIC TORQUE: 1,000 (± 2%) IN-LBS.
- (10) ULTIMATE TENSILE OR COMPRESSIVE STRENGTH: 400 LBS (± 2%).
- (11) DYNAMIC TORQUE ENDURANCE TEST: 150 IN-LBS (± 2%) AT 120 RPM AND A 15° OPERATING ANGLE FOR 2 HRS.

SHAPE OF BOTTOM OPTIONAL DRILL POINT MUST NOT BREAK THRU TYP

- INSPECTION HOLE THRU ONE WALL ONLY.
- CENTERLINE SHALL LIE IN A DIRECTION PARALLEL TO THE PIVOT CENTERLINE OF THE YOKE EAR HOLES WITHIN 1° TYP

DO NOT SCALE DRAWING

UNLESS OTHERWISE SPECIFIED
CHAMFER ALL HOLES
BREAK ALL SHARP CORNERS
DE-BURR ALL FEATURES

TURNED SURFACES: 65/125
MILLED SURFACES: 125

PROPRIETARY AND CONFIDENTIAL
THE INFORMATION CONTAINED IN THIS DRAWING IS THE SOLE PROPERTY OF BELDEN INCORPORATED. ANY REPRODUCTION IN PART OR AS A WHOLE WITHOUT THE WRITTEN PERMISSION OF BELDEN INCORPORATED IS PROHIBITED.

STANDARD TOLERANCES, UNLESS OTHERWISE SPECIFIED

DIMENSIONS ARE IN INCHES [mm]

ANGULAR MACHINED: ±1.0°
FRACTIONAL: ±.015"
TWO PLACE DECIMAL: ±.010"
THREE PLACE DECIMAL: ±.005"
FOUR PLACE DECIMAL: ±.0005"
CONCENTRICITY: .0003" T.I.R.

ALL HOLES TO BE LOCATED ON CENTERLINE (±) WITHIN .005" T.I.R.
INTERPRET GEOMETRIC TOLERANCES I.A.W. ANSI Y14.5M-1992

MATERIAL: ALLOY STEEL

HEAT TREAT: SEE DETAIL DRAWINGS

FINISH: CADMIUM PLATED

NAME	DATE
RNK	24AUG04
CHECKED	RNK 07FEB08
ENG APPR.	RNK 07FEB08
MFG APPR.	
G.A.	
COMMENTS:	

BELDEN INCORPORATED
www.beldenuniversal.com

TITLE: ASSEMBLY, UNIVERSAL JOINT, (MIL-STD)

SIZE	DWG. NO.	REV
C	MS20270B12	

SCALE: 3:1 WT (Lbs): 0.136 SHEET 1 OF 2