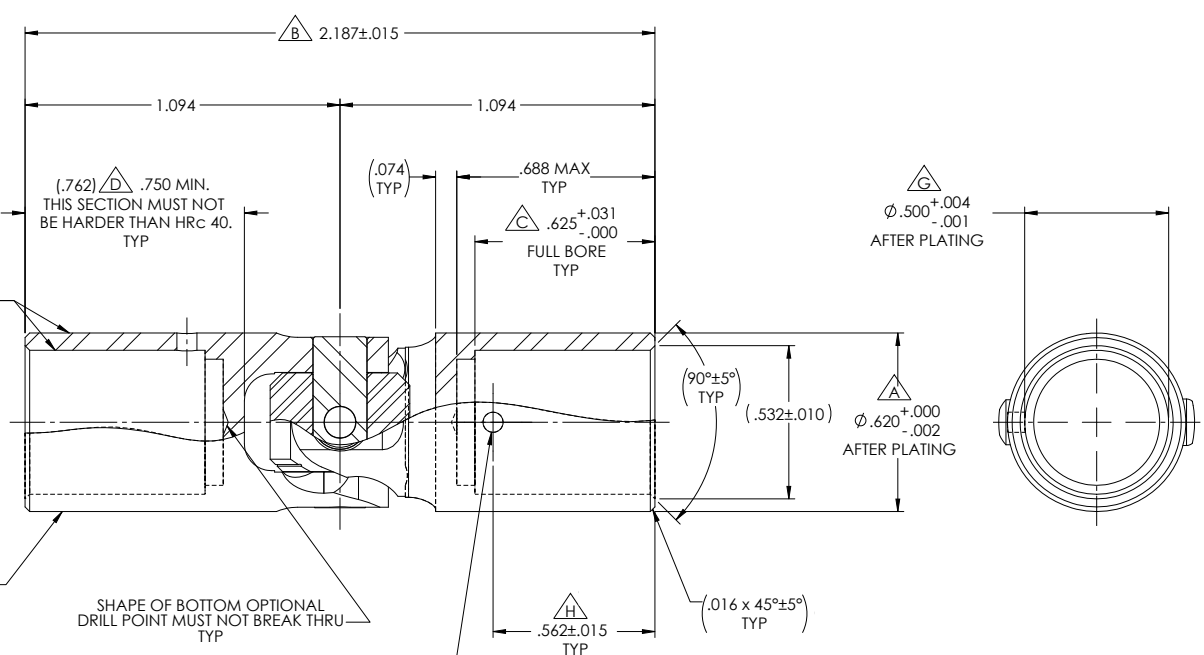
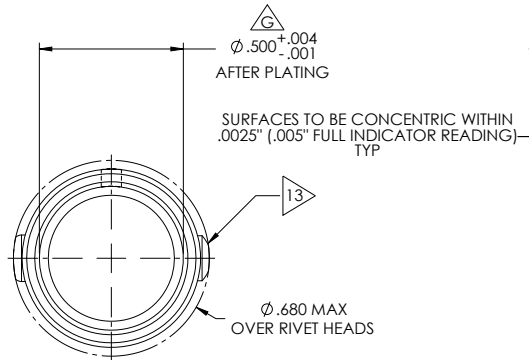
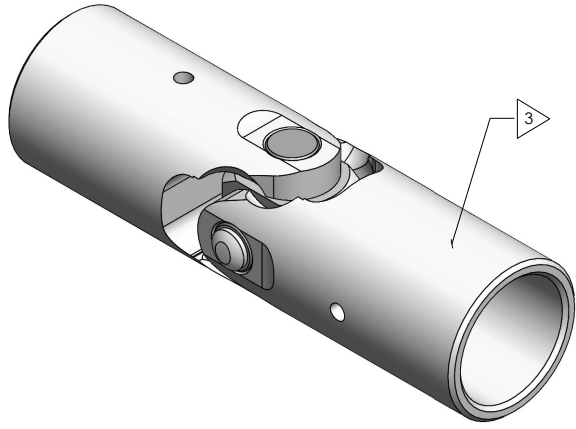


REVISIONS				
ZONE	REV.	DESCRIPTION	DATE	APPROVED



NOTES(s), UNLESS OTHERWISE SPECIFIED.

- (1) UNIVERSAL JOINT DESIGNED AND TESTED I.A.W. MIL-DTL-6193, CLASS 1 AND MS20270, TYPE B.
- (2) REFERENCE, FINISH: ALL EXTERNAL STEEL COMPONENTS, EXCEPT RIVET: CADMIUM PLATED I.A.W. SAE AMS-QQ-P-416, TYPE II (YELLOW CHROMATE), CLASS 2.
- 3 IDENTIFICATION: ELECTRO-ETCH or LASER MARK ASSEMBLY w/ NAME, PART NUMBER, MANUFACTURER CAGE CODE, DATE OF MANUFACTURE (MO/YR), & BELDEN JOB No. I.A.W. MIL-STD-130 AS SHOWN.

BELDEN
 MS20270B10
 1R6X2 (MO/YR)
 (JOB No.)

- (4) LUBRICATION: LUBRICATE WITH OIL CONFORMING TO MIL-PRF-7870.
- (5) ANGULARITY: MUST BE OPERABLE TO A MINIMUM ANGLE OF 30°.
- (6) MAXIMUM ALLOWABLE TORSIONAL PLAY (BACKLASH): 0.64° (± 2%) @ 4 Lb-In (± 2%).
- (7) MAXIMUM ALLOWABLE END PLAY: .0035" TOTAL WITH A 5 LB LOAD APPLIED IN BOTH DIRECTIONS WITHOUT LUBRICANT.
- (8) MAXIMUM ALLOWABLE SIDE PLAY: .0080" TOTAL WITH A 5 LB LOAD APPLIED IN BOTH DIRECTIONS WITHOUT LUBRICANT.
- (9) REF., STATIC TORQUE: 500 (± 2%) Lb-In.
- (10) REF., TENSILE OR COMPRESSIVE STRENGTH: 300 LBS (± 2%).
- (11) DYNAMIC TORQUE ENDURANCE TEST: 75 Lb-In (± 2%) AT 120 RPM AND A 15° OPERATING ANGLE FOR 2 HRS.
- (12) FLAG NOTES ΔA , ΔB , ΔC ... CORRESPOND TO DIMENSIONS AS LABELED ON SPECIFICATION MS20270.
- (13) RIVET I.A.W. BEL-ES-0005.

**FOR
REFERENCE
ONLY**
 DO NOT SCALE DRAWING

UNLESS OTHERWISE SPECIFIED CHAMFER ALL HOLES BREAK ALL SHARP CORNERS DE-BURR ALL FEATURES TURNED SURFACES: $\sqrt{63}$ MILLED SURFACES: $\sqrt{125}$ PROPRIETARY AND CONFIDENTIAL THE INFORMATION CONTAINED IN THIS DRAWING IS THE SOLE PROPERTY OF BELDEN UNIVERSAL. ANY REPRODUCTION IN PART OR AS A WHOLE WITHOUT THE WRITTEN PERMISSION OF BELDEN UNIVERSAL IS PROHIBITED.	STANDARD TOLERANCES, UNLESS OTHERWISE SPECIFIED DIMENSIONS ARE IN INCHES [mm] ANGULAR MACHINED: ±1.0° FRACTIONAL: ±.015" TWO PLACE DECIMAL: ±.010" THREE PLACE DECIMAL: ±.005" FOUR PLACE DECIMAL: ±.0005" CONCENTRICITY: .0025" T.I.R.	MATERIAL: ALLOY STEEL FINISH: CADMIUM PLATED	INITIALS DATE DRAWN: RNK 06FEB01 CHECKED: RNK 06FEB01 ENG APPR: RNK 06FEB01 MFG APPR: QC APPR:	TITLE: Belden Universal www.beldenuniversal.com ASSEMBLY, UNIVERSAL JOINT, (MIL-STD)	
	ALL HOLES TO BE LOCATED ON CENTERLINE (C) WITHIN .005" T.I.R. INTERPRET GEOMETRIC TOLERANCES I.A.W. ASME Y14.5	COMMENTS:	SIZE A	DWG. NO. MS20270B10	REV
	SCALE: 3:1 WT (Lbs): 0.092 SHEET 1 OF 2		SHEET 1 OF 2		
	FORM SW-A 5-18 8				